

## HIGH POWER DENSITY LITHIUM CELLS

- 40A CHARGE RATE—PER SINGLE BATTERY
- 60A DISCHARGE RATE—PER SINGLE BATTERY
- 100% DEPTH OF DISCHARGE (DOD)
- WIDER TEMPRATURE TOLERANCE
- SMART MONITORING & FUTURE FIRMWARE UPGRADES
- MODULAR—UP TO 8 BATTERIES IN PARALLEL
- 12 YEARS WARRANTY
- WALL MOUNTED OR FLOOR STANDING
- BATTERY TO BATTERY & BATTERY TO CONTROLLER CABLES PACKED WITH EVERY BATTERY
- UK TECHNICAL SUPPORT

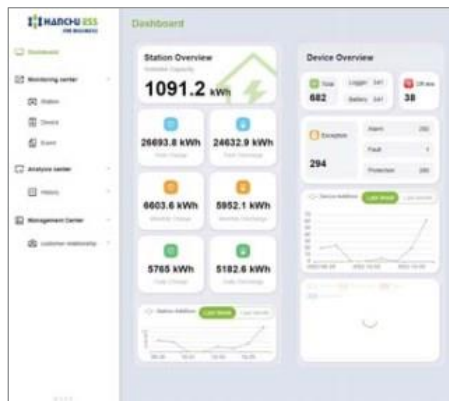
100% Usable  
BATTERY CAPACITY

**12Year**  
Warranty

# LVES Home L Series Low Voltage Battery

“ **FREE**  
MANUFACTURER  
MONITORING ”

Hanchuess’ LVES Home L Series is a low-voltage lithium battery specially designed for residential usage. Based on a leading-edge design and advanced battery/EMS system, it has excellent performance and is safer, more stable and more convenient to us



# LVES Home L Series



### Ultra Safe

Built with safe lithium ion phosphate battery cells, equipped with over-standard protection structure material.



### Smart BMS & IOT Monitoring

Built-in intelligent BMS provides strong protection, Free & handy monitoring on mobile & PC.



### Unique & Leading-edge

(HPD) Higher power density, 100% DOD, faster charge&discharge, remote upgrading and maintenance.



### Modular Design

3.2kWh Modular Design, Max 8 pcs paralleling connection



### Flexible & Easier Installation

Optional installation design for Zoor standing & wall-mounted



### Long Life Span

6000 cycles, 12 years life design

| Model                                     | LV-L3.2-1P   |
|---|--|
| <b>Nominal Capacity</b>                   | 3.2kWh   |
| <b>Usable Capacity</b>                    | 3.2kWh   |
| <b>Cell type</b>                          | LFP(LiFePO <sub>4</sub> )                                  |
| <b>Depth of Discharge</b>                 | 100%   |
| <b>Operating Voltage Range</b>            | 48 57.6V   |
| <b>Nominal Voltage</b>                    | 51.2V  |
| <b>Nominal Charging Current</b>           | 40A  |
| <b>Nominal Discharging Current</b>        | 60A  |
| <b>Max.Continuous Discharging Current</b> | 100A   |
| <b>Weight</b>                             | 34.9Kg   |
| <b>Dimension</b>                          | 484*302*165mm  |
| <b>OperatingTemperature</b>               | <b>Charge</b> From 0-50Â°(                                 |
|   | <b>Discharge</b> From -10-50Â°(                            |
| <b>Humidity</b>                           | U%   |
| <b>CoolingType</b>                        | Natural  |
| <b>IP rating of enclosure</b>             | IP54   |
| <b>Warranty</b>                           | 12years 6000cycles (70% SOC)                               |
| <b>Communication Port</b>                 | CAN/RS485  |
| <b>Capacity^ LVES-L Series^v</b>          | 3.2kWh/6.4kWh/9.6kWh/12.8kWh/16kWh/19.2kWh/22.4kWh/25.6kWh |
| <b>Safety</b>                             | IEC 62619  |
| <b>Transportation</b>                     | UN38.3   |

### Total Energy:

Test conditions, Cell Voltage 2.5~3.65V, 0.5C charge & discharge at +25±3Â°(. When the temperature is below 0Â°( or above 40Â°(, the perfor mance will be limited.