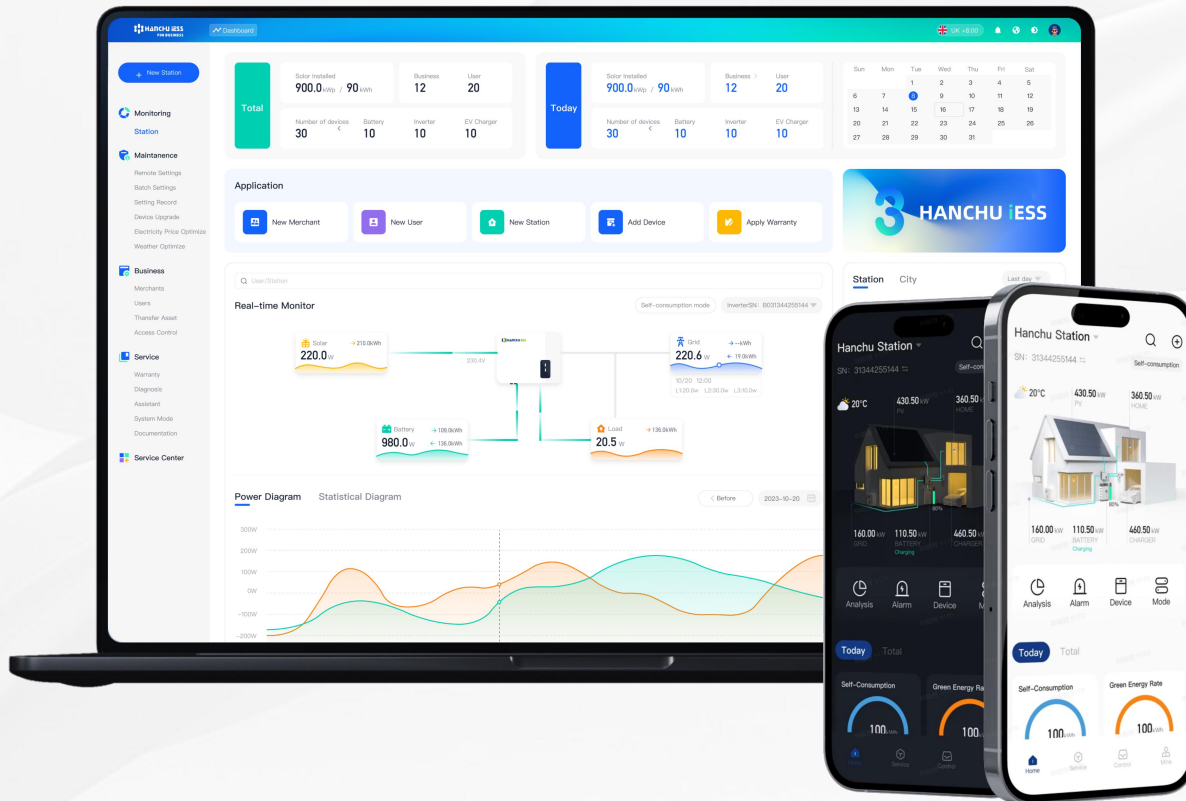


# Outdoor Storage Quick Guide—PC

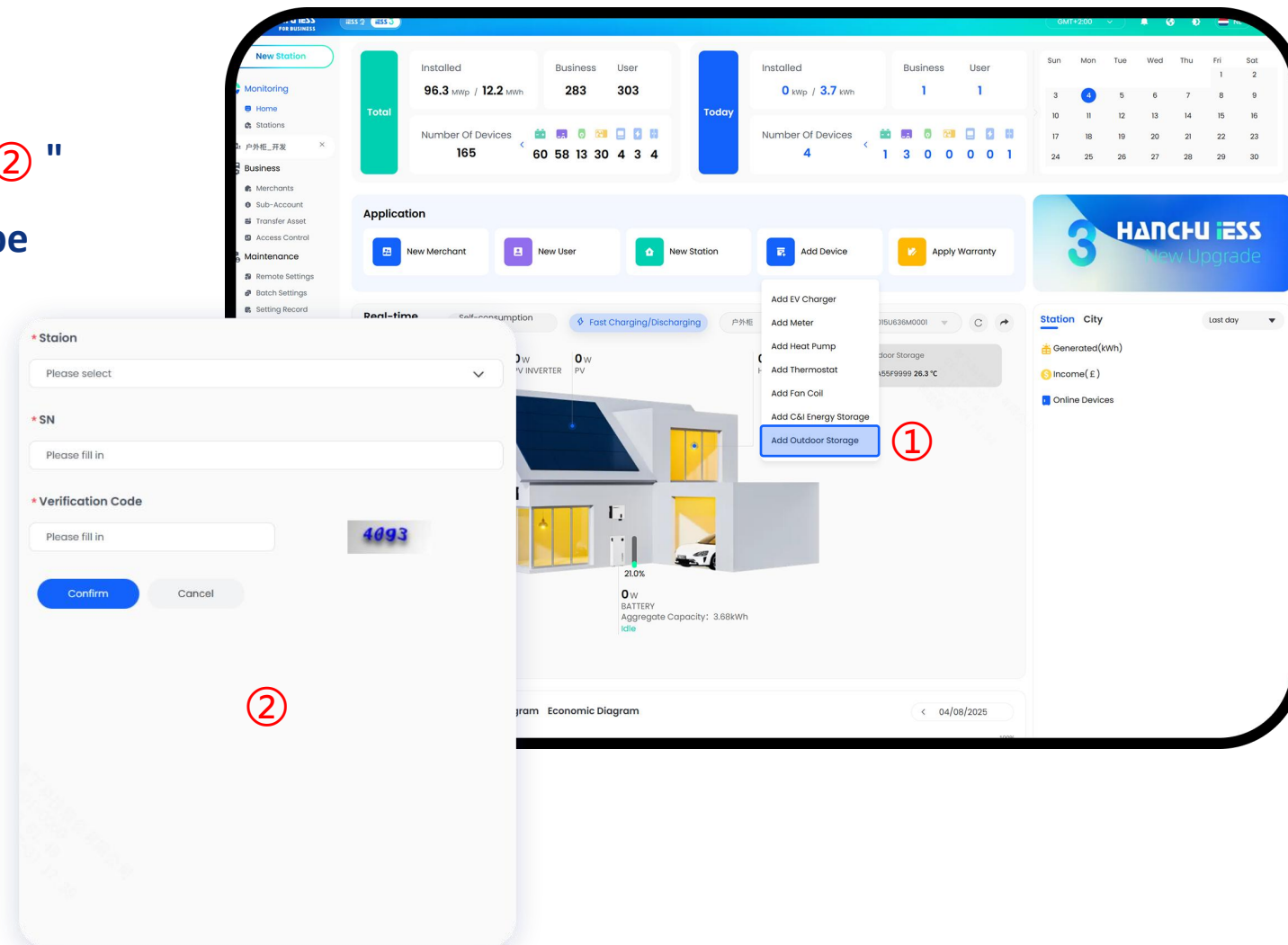


<https://www.hanchuess.com>



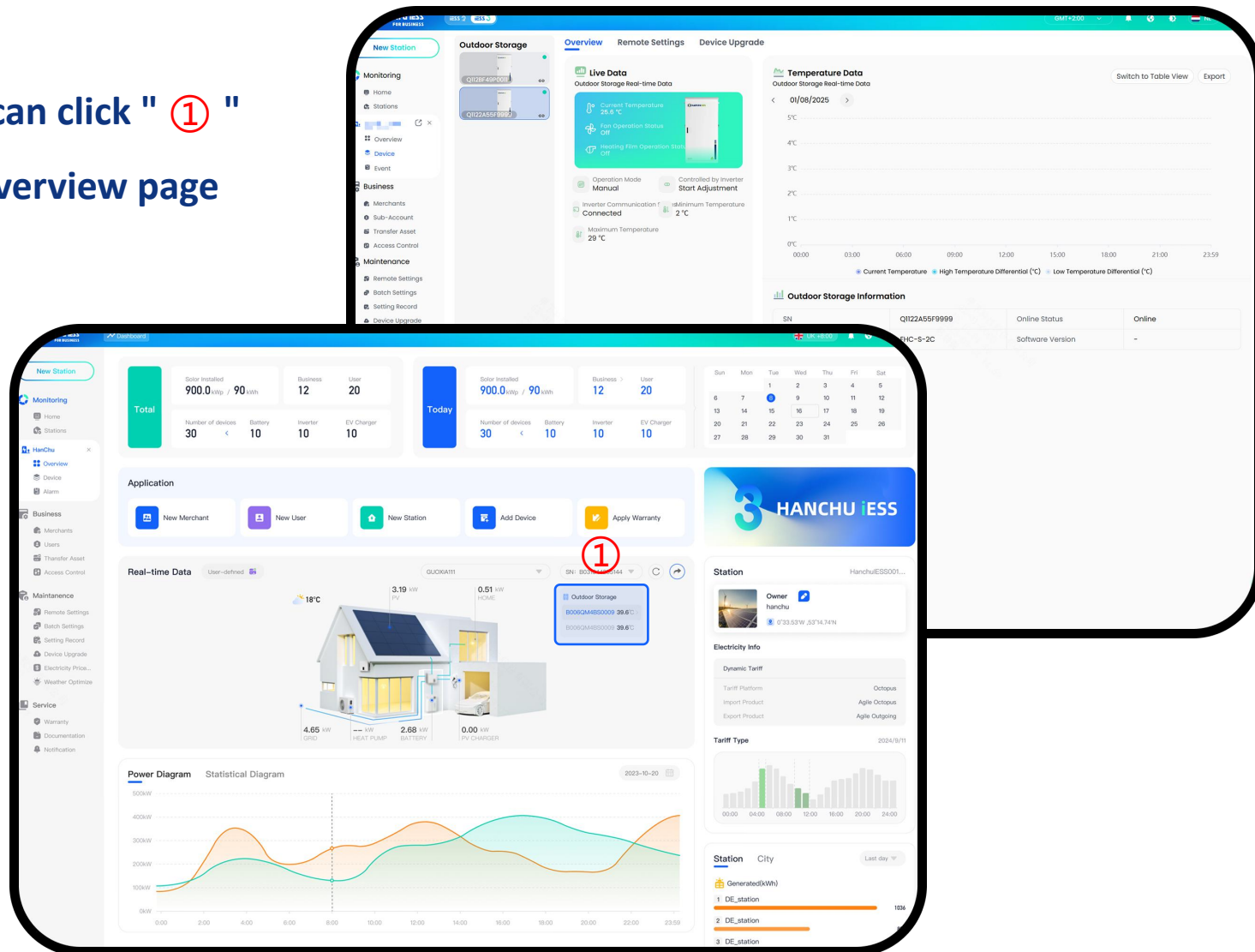
## ➤ Add Device

- Click " ① " to add a device.
- After completing the information for " ② " and clicking "Confirm," the device will be successfully added.



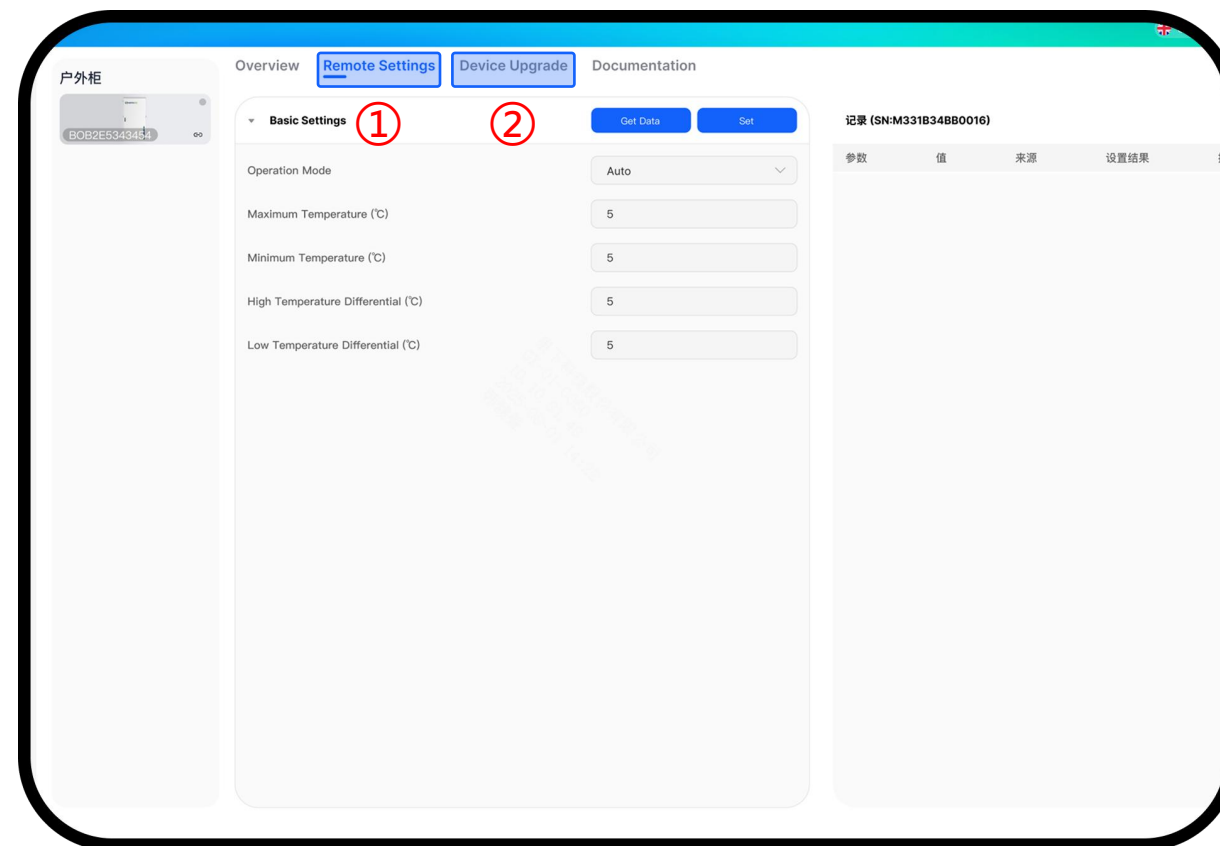
## Device Details

- After the device has been added, you can click " ① " in the scenario diagram on the plant overview page to navigate to the device details.



## ➤ Setting and OTA

- Select " ① " to remotely control the device.  
The available operating modes include: Auto, Manual, Inverter Control, Timer Control, and Timer Adjustment.
- Select " ② " to perform an OTA (Over-the-Air) upgrade for the device.



## Settings

- ① **Auto:** In unattended scenarios such as when the user is traveling or on a business trip, the automatic control mode can intelligently adjust heating and cooling based on the ambient temperature.
- ② **Manual:** Manually turn on/off heating and cooling.
- ③ **Inverter Control:** Real-time inverter commands to turn on/off heating and cooling.
- ④ **Timer Control:** Users can preset specific time periods to manually turn on/off heating and cooling.
- ⑤ **Timer Adjustment:** Users can preset time periods for the system to automatically adjust heating and cooling based on ambient temperature, without manual intervention.

①

Basic Settings

Get Data Set

Operation Mode: Auto

Maximum Temperature (°C): 5

Minimum Temperature (°C): 5

High Temperature Differential (°C): 5

Low Temperature Differential (°C): 5

②

Basic Settings

Get Data Set

Operation Mode: Manual

Fan Switch: ☐ On ☒ Off

Heating Switch: ☐ On ☒ Off

High Temperature Differential (°C): 5

Low Temperature Differential (°C): 5

③

Basic Settings

Get Data Set

Operation Mode: Inverter Control

High Temperature Differential (°C): 5

Low Temperature Differential (°C): 5

④

Basic Settings

Get Data Set

Operation Mode: Custom

Custom Mode: Timer Control

Timer Control Period 1

Start/End Time: 05:30-13:30

Enabled: ☐ On ☒ Off

Fan Switch: ☐ On ☒ Off

Heating Switch: ☐ On ☒ Off

Timer Control Period 2

Start/End Time: 13:30-20:00

Enabled: ☐ On ☒ Off

Fan Switch: ☐ On ☒ Off

Heating Switch: ☐ On ☒ Off

Timer Control Period 3

High Temperature Differential (°C): 5

Low Temperature Differential (°C): 5

⑤

Basic Settings

Get Data Set

Operation Mode: Custom

Custom Mode: Timer Adjustment

Maximum Temperature (°C): 30

Minimum Temperature (°C): [0-30]

Timer Control Period 1

Start/End Time: 05:30-13:30

Enable: ☐ On ☒ Off

Timer Control Period 2

Start/End Time: 13:30-20:00

Enable: ☐ On ☒ Off

Timer Control Period 3

High Temperature Differential (°C): 5

Low Temperature Differential (°C): 5

# Thanks

---

Jiangsu Hanchu Energy Technology Co., LTD

Innovate · Enjoy  
Smart Energy, Sustainable Solutions