

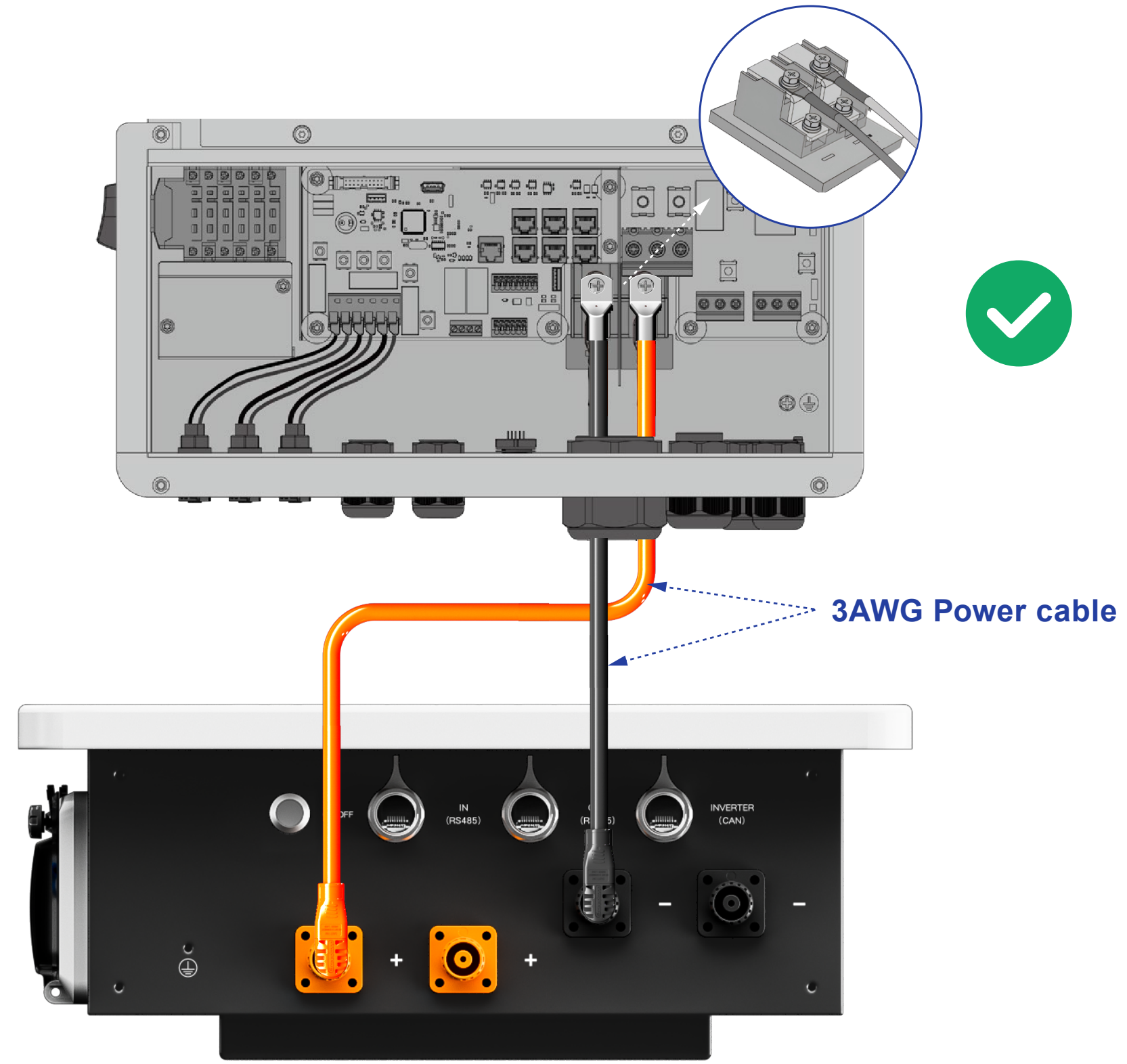
# •Wiring Instructions for HESS-HY-S-7.0~10.0K Inverter and HOME-ESS-LV-5.12K-M Battery

	HOME-ESS-LV-5.12K-M * 1	HOME-ESS-LV-5.12K-M * 2	HOME-ESS-LV-5.12K-M * N (2<N≤16)
<b>External Accessories</b>	NO	NO	YES
<b>Cable Used</b>	1.5m 3AWG positive Power cable (BAT-INV) * 1 1.5m 3AWG negative Power cable (BAT-INV) * 1 1.5m CAN communication cable * 1	1.5m 3AWG positive Power cable (BAT-INV) * 2 1.5m 3AWG negative Power cable (BAT-INV) * 2 1.5m CAN communication cable (BAT-INV) * 1 0.8m RS485 communication cable (BAT-BAT) * 1	1.5m 0AWG positive Power cable (BAT-INV) * 1 1.5m 0AWG negative Power cable (BAT-INV) * 1 0.8m 0AWG positive Parallel cable (BAT-BAT) * N-1 0.8m 0AWG negative Parallel cable (BAT-BAT) * N-1 1.5m CAN communication cable (BAT-INV) * 1 0.8m RS485 communication cable (BAT-BAT) * N-1
<b>Set Total Charge/Discharge Current Limit via App/Website</b>	Default (Do not need to set)	Set to 200A	Set to 220A(Max.)



# Configuration 1: Single Battery

- **Wiring:** Connect the battery to the inverter using the standard cable.
- **Configuration:** Do not need to set.
- **External Accessory:** No



Overview Remote Settings Device Upgrade Documentation Telemetry

**Basic Setup** Get Data Set

charge forbidden	<input type="radio"/> On	<input checked="" type="radio"/> Off
discharge forbidden	<input type="radio"/> On	<input checked="" type="radio"/> Off
Request Force Charge	<input type="radio"/> On	<input checked="" type="radio"/> Off
Heating control switch	<input checked="" type="radio"/> On	<input type="radio"/> Off
Basic Charge Current Limit	<input type="text" value="100"/>	
Basic Discharge Current Limit	<input type="text" value="100"/>	
Charging Current Limitation at Low Temperature	<input type="text" value="20"/>	
Temperature Normal Charge Current Limit	<input type="text" value="100"/>	
<b>Total Charge Current Limit</b>	<input type="text" value="100"/>	
<b>Total Discharge Current Limit</b>	<input type="text" value="100"/>	

Basic Setup

discharge forbidden

Request Force Charge

Heating control switch

Basic Charge Current Limit  
100

Basic Discharge Current Limit  
100

Charging Current Limitation at Low Temperature  
20

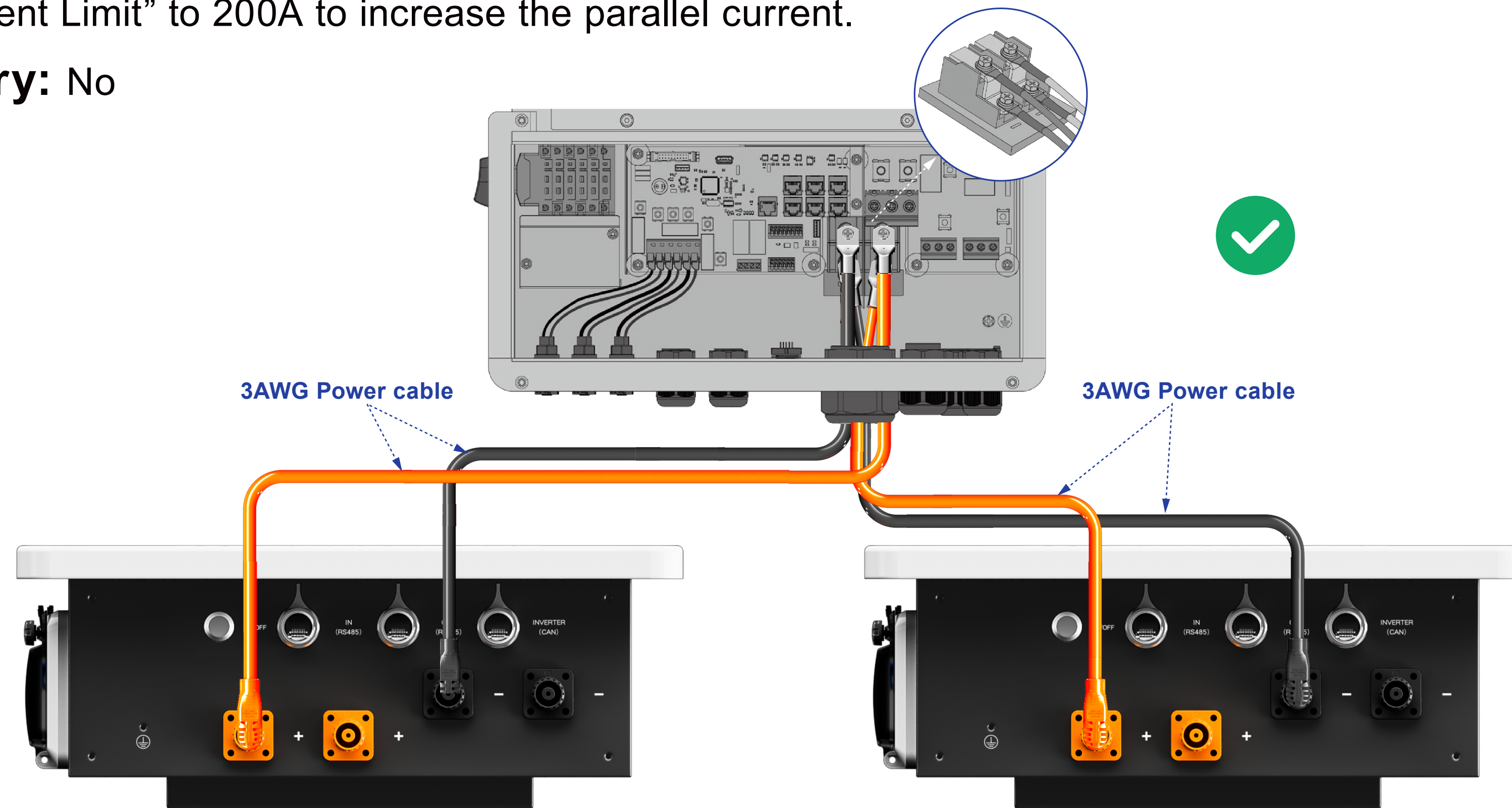
Temperature Normal Charge Current Limit  
100

**Total Charge Current Limit**  
100

**Total Discharge Current Limit**  
100

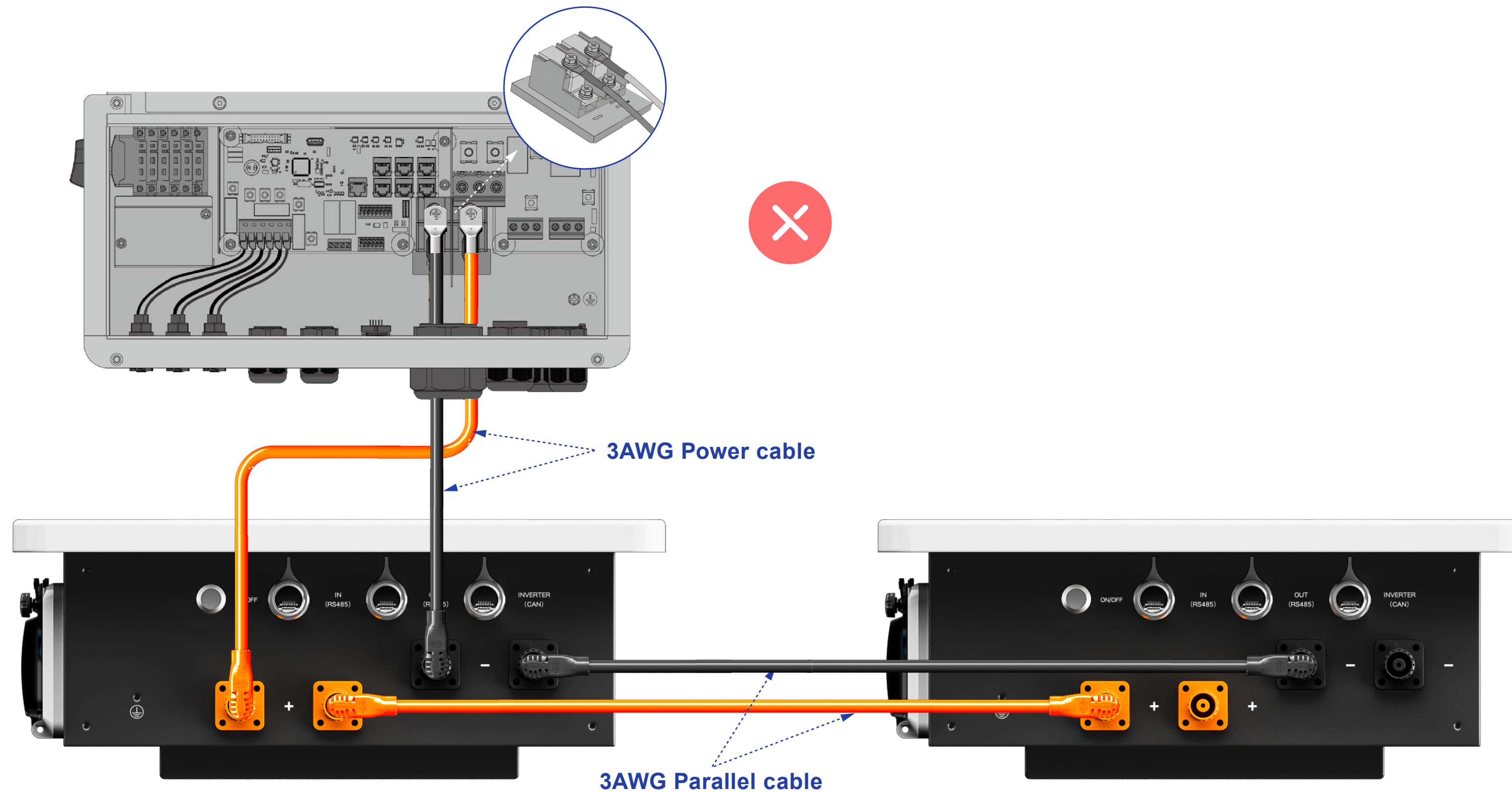
## Configuration 2: Two Batteries(1)

- **Wiring:** Use the standard cable to connect each of the two batteries to the inverter.
- **Note:** The batteries connected to the two battery terminals of the inverter must be of the same brand and exactly the same model.
- **Configuration:** Log in to the HANCHU APP or the IESS portal and reconfigure the parallel current limit, change the “Total Charge/Discharge Current Limit” to 200A to increase the parallel current.
- **External Accessory:** No



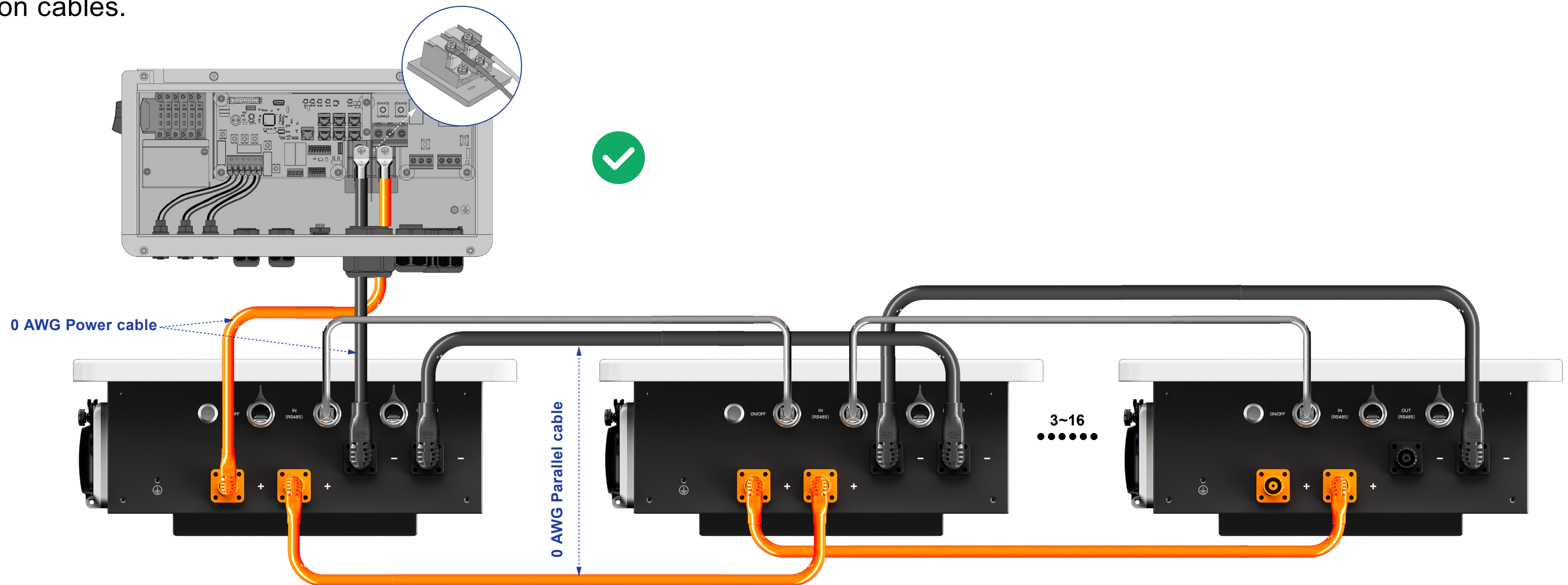
## Configuration 2: Two Batteries(2)

- **Incorrect Wiring:** Use the standard cable to connect one battery to the inverter, then parallel the second battery, and set the parallel charge/discharge current to 200A.
- **Reason for Error:** The standard cable is rated for a maximum current of 100A, which is exceeded when the current is set to 200A.



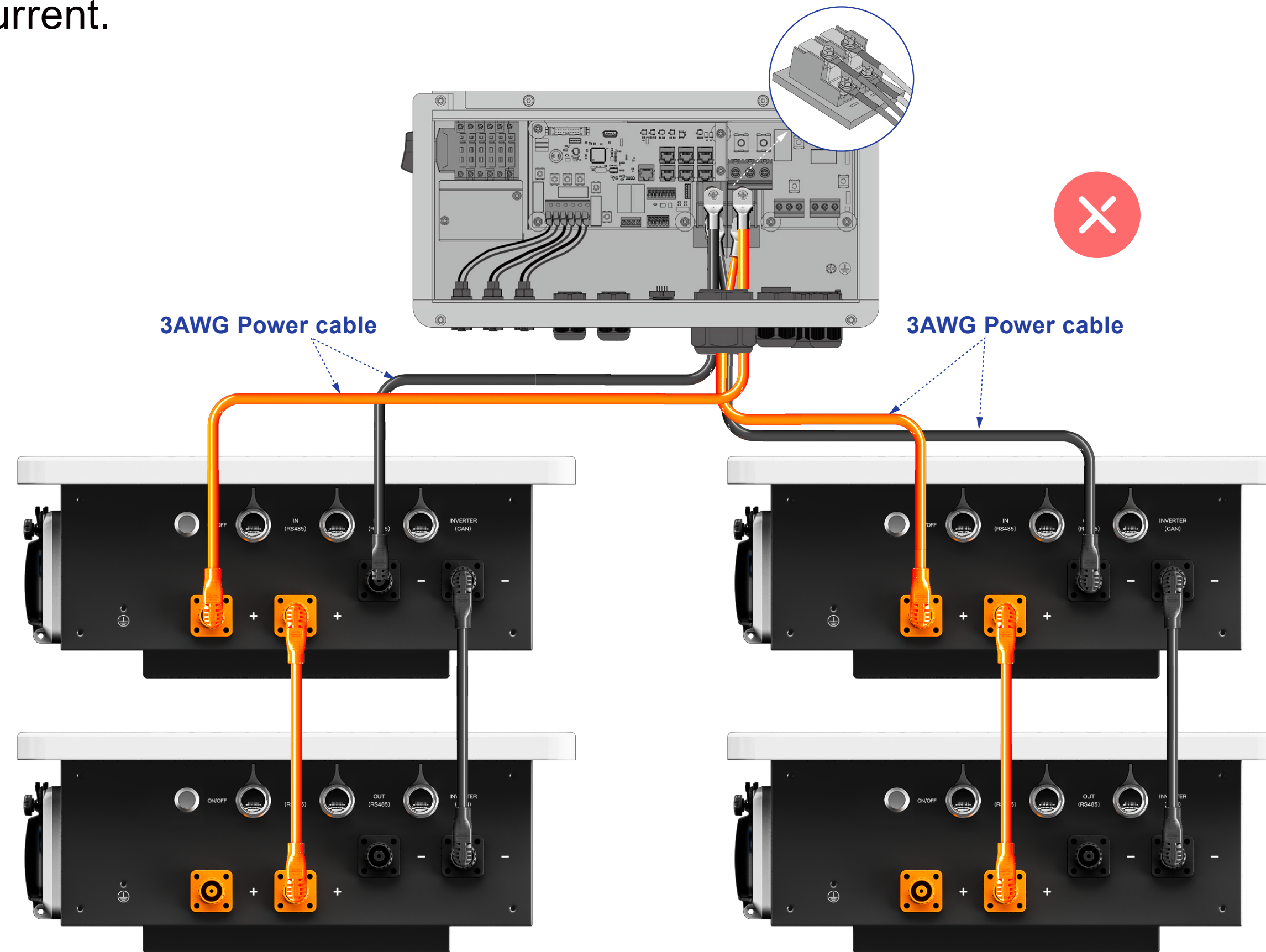
## Configuration 3: Three or more batteries(1)

- **Wiring:** Use 0AWG power cable to connect one battery to the inverter; connect the remaining batteries in parallel.
- **Configuration:** Log in to the HANCHU APP or the IESS portal and reconfigure the parallel current limit, change the “**Total Charge/Discharge Current Limit**” to **220A** to increase the parallel current.
- **External Accessory:** One set of 0AWG power cables and (number of parallel batteries minus one) sets of 0AWG parallel connection cables.



## Configuration 3: : Three or more batteries(2)

- **Incorrect wiring for four batteries in parallel:** Use the standard cable to connect two batteries to the inverter and parallel the remaining two batteries.
- **Reason for error:** If one of the batteries fails, the standard cable on the other path between the inverter and batteries will exceed its maximum operating current.



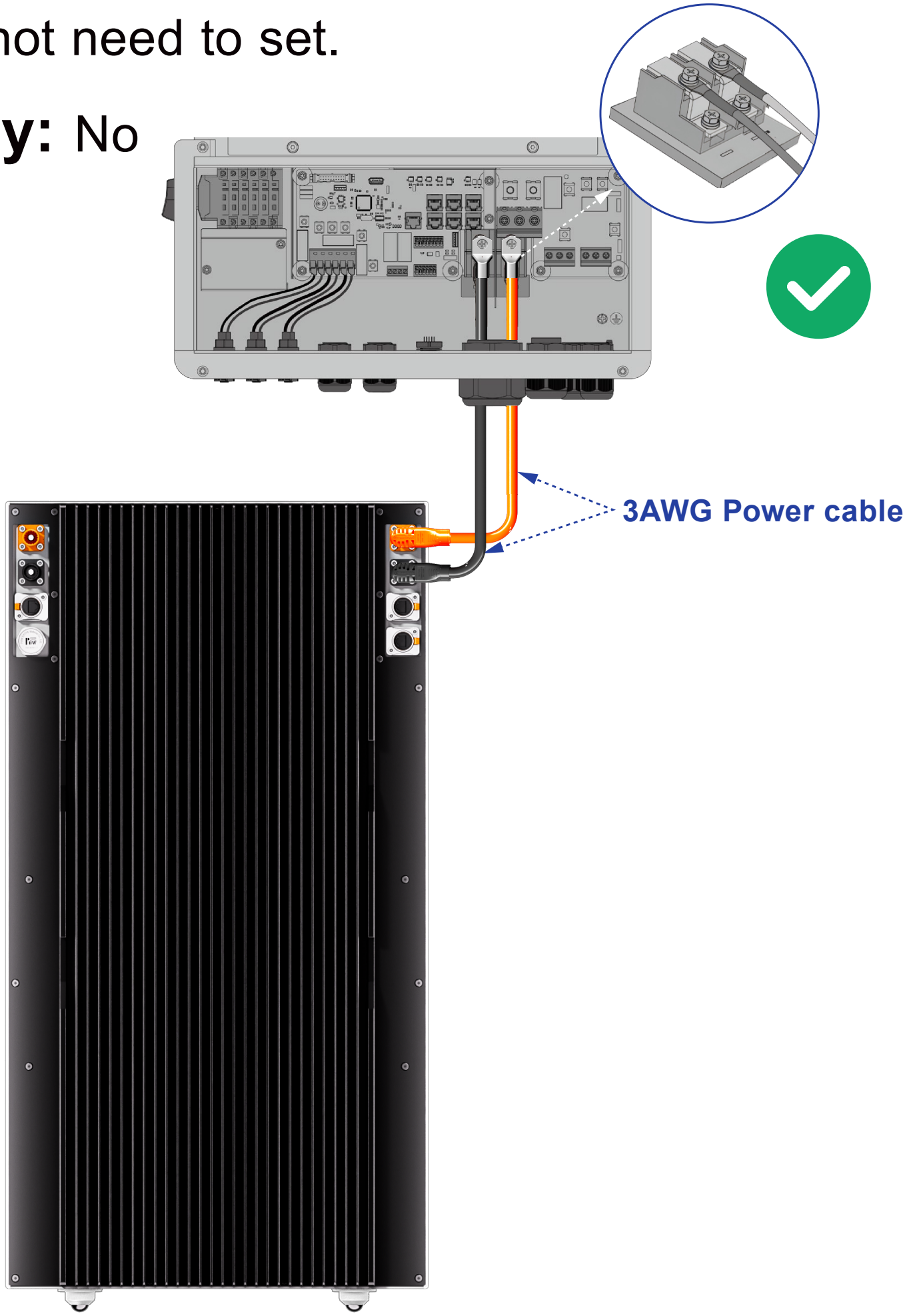
# •Wiring Instructions for HESS-HY-S-7.0~10.0K Inverter and HOME-ESS-LV-9.4K Battery

	HOME-ESS-LV-9.4K * 1	HOME-ESS-LV-9.4K * 2	HOME-ESS-LV-9.4K*N(2<N≤8)
<b>External Accessories</b>	NO	NO	YES (Combiner Box)
<b>Cable Used</b>	1.2m 3AWG positive Power cable (BAT-INV) * 1 1.2m 3AWG negative Power cable (BAT-INV) * 1 1.2m CAN communication cable * 1	1.2m 3AWG positive Power cable (BAT-INV) * 2 1.2m 3AWG negative Power cable (BAT-INV) * 2 1.2m CAN communication cable (BAT-INV) * 1 0.4m RS485 communication cable (BAT-BAT) * 1	Use the 10 Power cables in Combiner Box only, following the user manual of Combiner Box 1.2m CAN communication cable (BAT-INV) * 1 0.4m RS485 communication cable (BAT-BAT) * N-1
<b>Set Total Charge/Discharge Current Limit via App/Website</b>	Default (Do not need to set)	Set to 200A	Set to 250A(Max.)



# Configuration 1: Single Battery

- **Wiring:** Connect the battery to the inverter using supplied power cable.
- **Configuration:** Do not need to set.
- **External Accessory:** No



Overview Remote Settings Device Upgrade Documentation Telemetry

**Basic Setup** Get Data Set

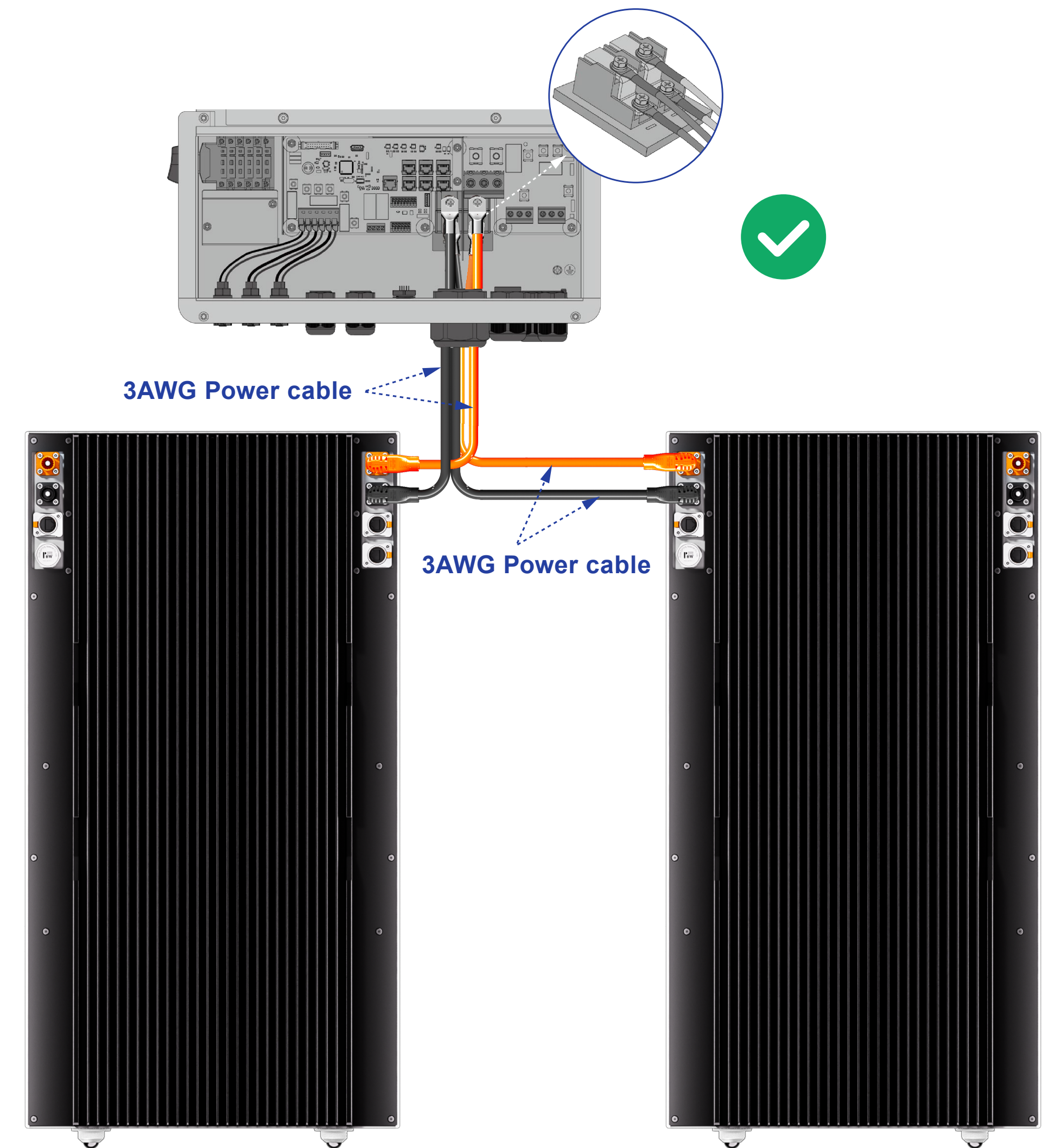
charge forbidden	<input type="radio"/> On <input checked="" type="radio"/> Off
discharge forbidden	<input type="radio"/> On <input checked="" type="radio"/> Off
Request Force Charge	<input type="radio"/> On <input checked="" type="radio"/> Off
Heating control switch	<input checked="" type="radio"/> On <input type="radio"/> Off
Basic Charge Current Limit	<input type="text" value="100"/>
Basic Discharge Current Limit	<input type="text" value="100"/>
Charging Current Limitation at Low Temperature	<input type="text" value="100"/>
Temperature Normal Charge Current Limit	<input type="text" value="100"/>
<b>Total Charge Current Limit</b>	<input type="text" value="100"/>
<b>Total Discharge Current Limit</b>	<input type="text" value="100"/>

**Basic Setup**

discharge forbidden	<input type="checkbox"/>
Request Force Charge	<input type="checkbox"/>
Heating control switch	<input checked="" type="checkbox"/>
Basic Charge Current Limit	<input type="text" value="100.00"/>
Basic Discharge Current Limit	<input type="text" value="100.00"/>
Charging Current Limitation at Low Temperature...	<input type="text" value="100.00"/>
Temperature Normal Charge Current Limit	<input type="text" value="100.00"/>
<b>Total Charge Current Limit</b>	<input type="text" value="100.0"/>
<b>Total Discharge Current Limit</b>	<input type="text" value="100.0"/>

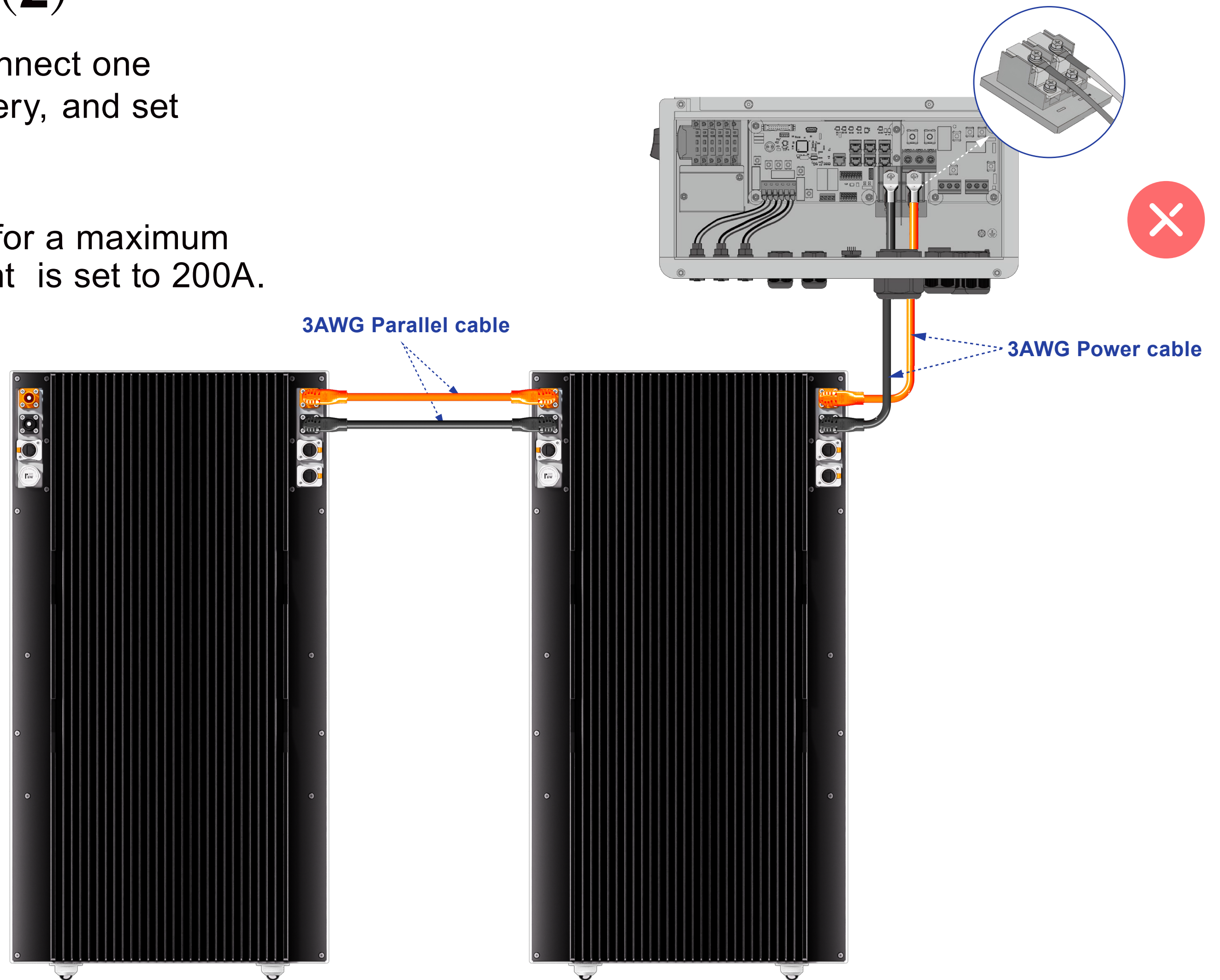
## Configuration 2: Two Batteries (1)

- **Wiring:** Use the standard cable to connect each of the two batteries to the inverter.
- **Note:** The batteries connected to the two battery terminals of the inverter must be of the same brand and exactly the same model.
- **Configuration:** Log in to the HANCHU APP or the IESS portal and reconfigure the parallel current limit, change the “Total Charge/Discharge Current Limit” to 200A to increase the parallel current.
- **External Accessory:** No



## Configuration 2: Two Batteries (2)

- **Incorrect Wiring:** Use the standard cable to connect one battery to the inverter, then parallel the second battery, and set the parallel charge/discharge current to 200A.
- **Reason for Error:** The standard cable is rated for a maximum current of 100A, which is exceeded when the current is set to 200A.



## Configuration 3: Three to Eight batteries

- **Wiring:** Use the standard cable together with a HANCHU combiner box.
- **Configuration:** Log in to the HANCHU APP or the IESS portal and reconfigure the parallel current limit, change the “**Total Charge/Discharge Current Limit**” to **250A** to increase the parallel current.
- **External Accessory:** One HANCHU combiner box, Power cables included within the combiner box.

\*For details, please check the installation guide of combiner box.

