

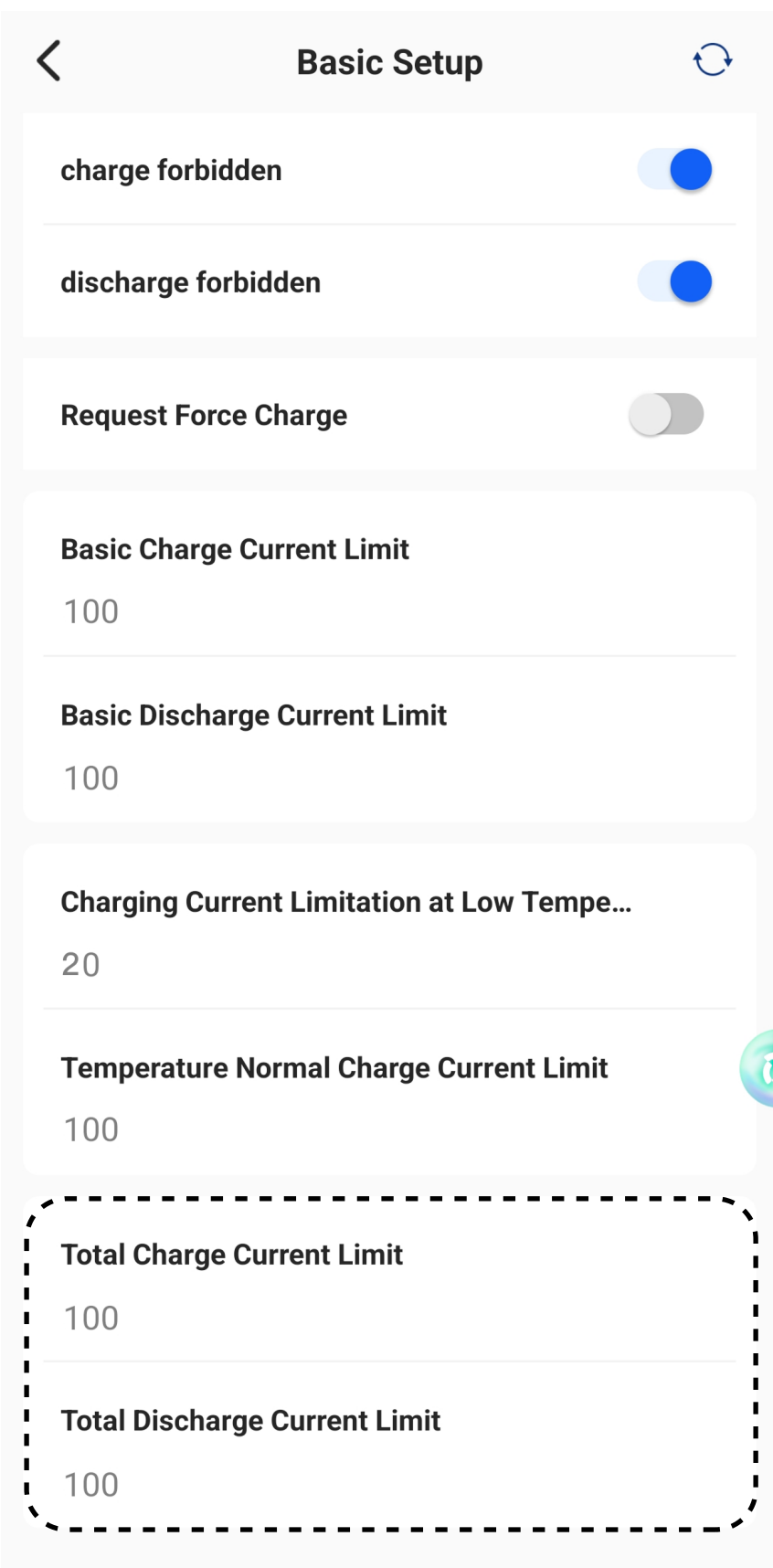
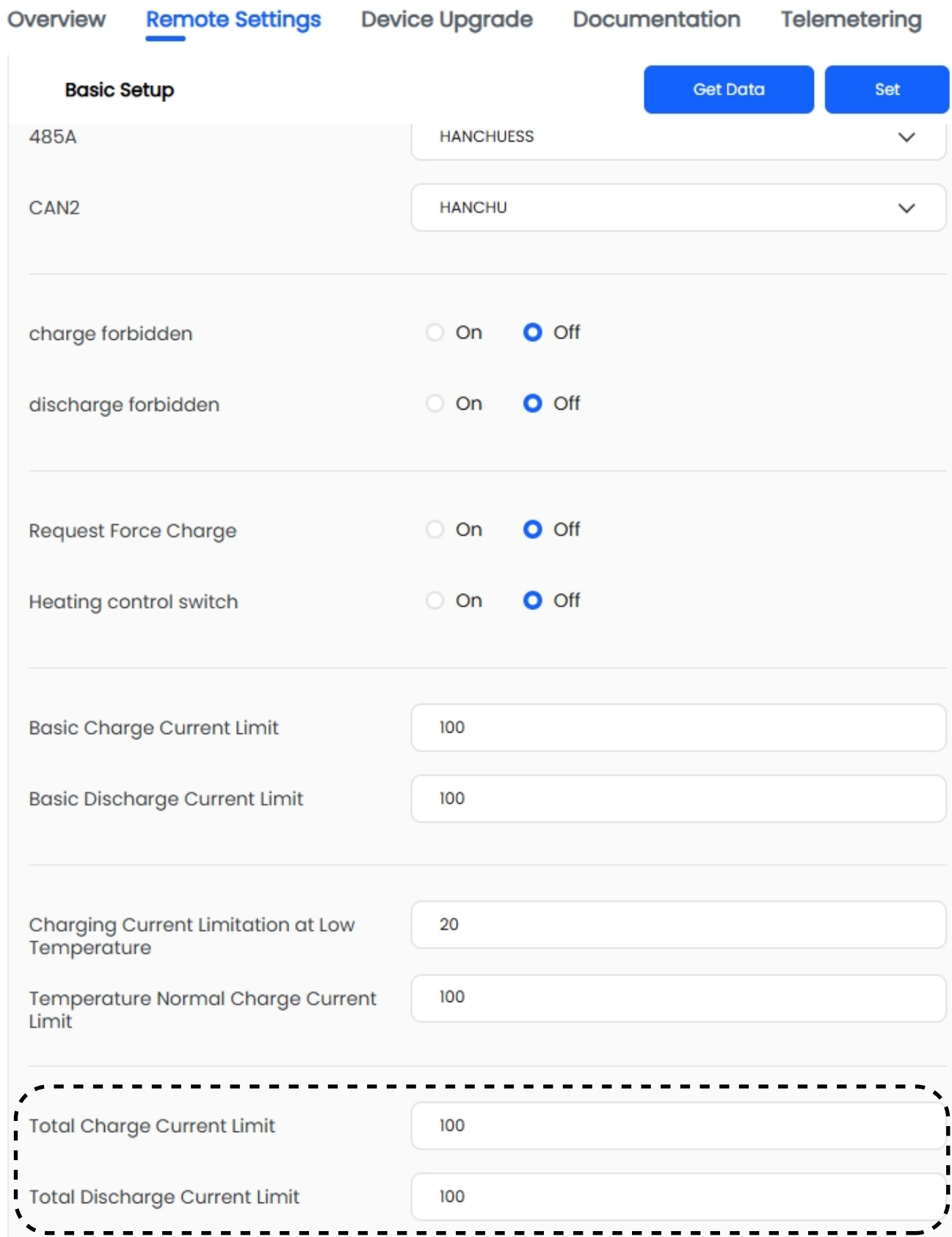
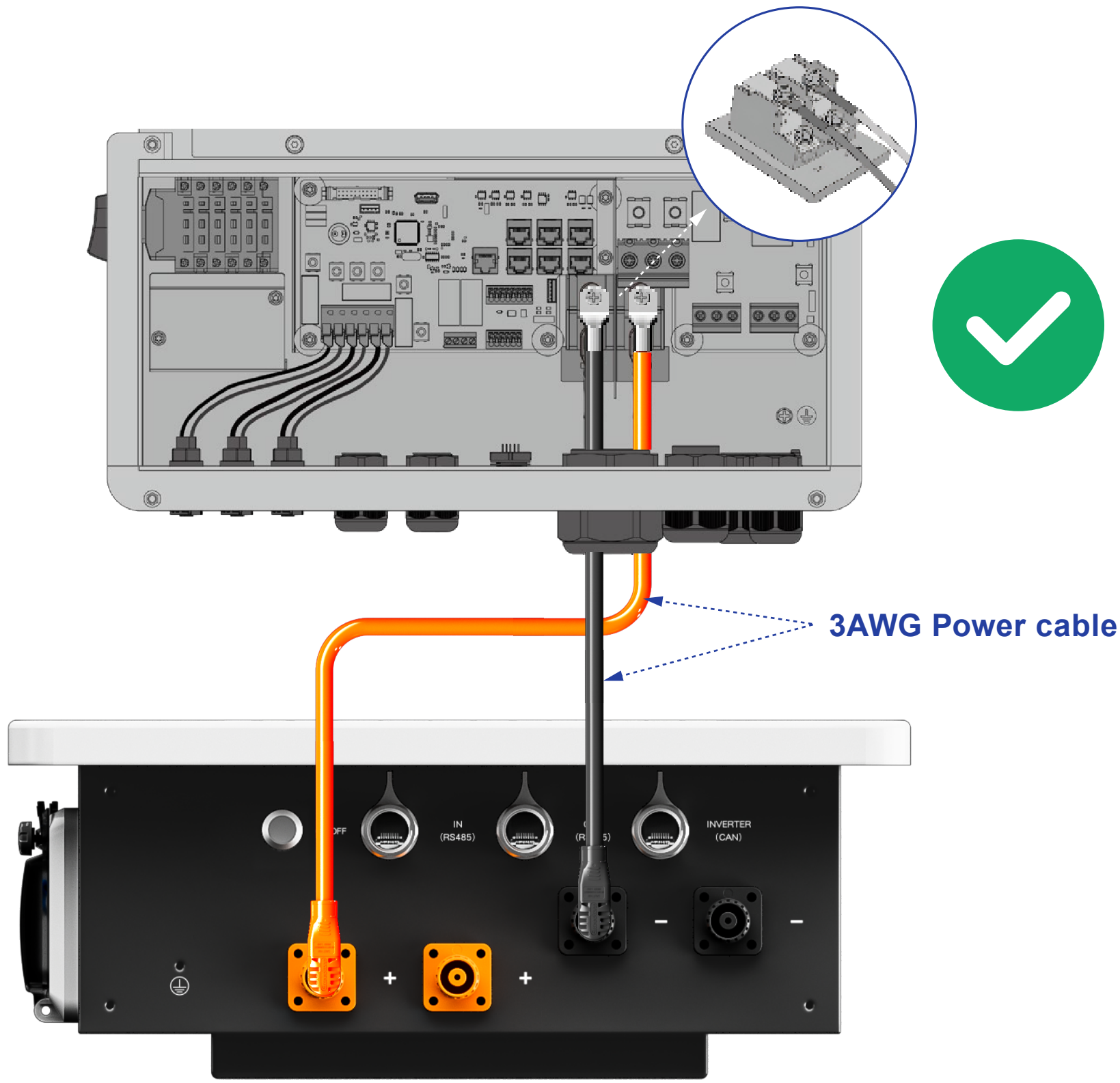
•Wiring Instructions for HESS-HY-S-7.0~10.0K Inverter and HOME-ESS-LV-5.12K-M Battery

	HOME-ESS-LV-5.12K-M * 1	HOME-ESS-LV-5.12K-M * 2	HOME-ESS-LV-5.12K-M * N (2<N≤16)
External Accessories	NO	NO	YES
			NOTE: The cables highlighted are optional extras and are not included in the standard package.
Cable Used	1.5m 3AWG positive Power cable (BAT-INV) * 1 1.5m 3AWG negative Power cable (BAT-INV) * 1 1.5m CAN communication cable * 1	1.5m 3AWG positive Power cable (BAT-INV) * 2 1.5m 3AWG negative Power cable (BAT-INV) * 2 1.5m CAN communication cable (BAT-INV) * 1 0.8m RS485 communication cable (BAT-BAT) * 1	1.5m 0AWG positive Power cable (BAT-INV) * 1 1.5m 0AWG negative Power cable (BAT-INV) * 1 0.8m 0AWG positive Parallel cable (BAT-BAT) * N-1 0.8m 0AWG negative Parallel cable (BAT-BAT) * N-1 1.5m CAN communication cable (BAT-INV) * 1 0.8m RS485 communication cable (BAT-BAT) * N-1
Set Total Charge/Discharge Current Limit via App/Website	Default (Do not need to set)	Set to 200A	Set to 220A(Max.)



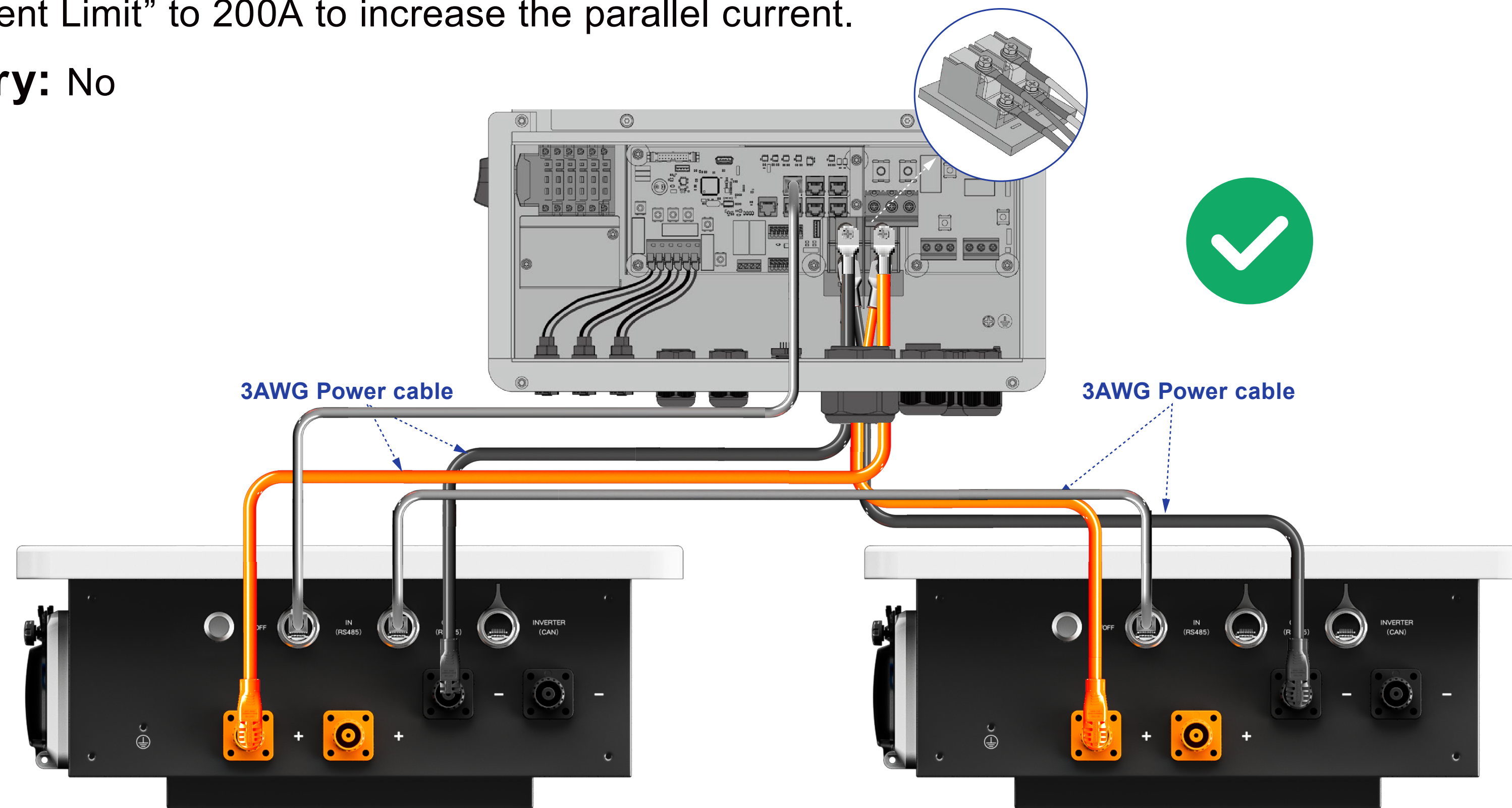
Configuration 1: Single Battery

- **Wiring:** Use 3AWG power cable to connect the battery to the inverter.
- **Configuration:** Do not need to set.
- **External Accessory:** No



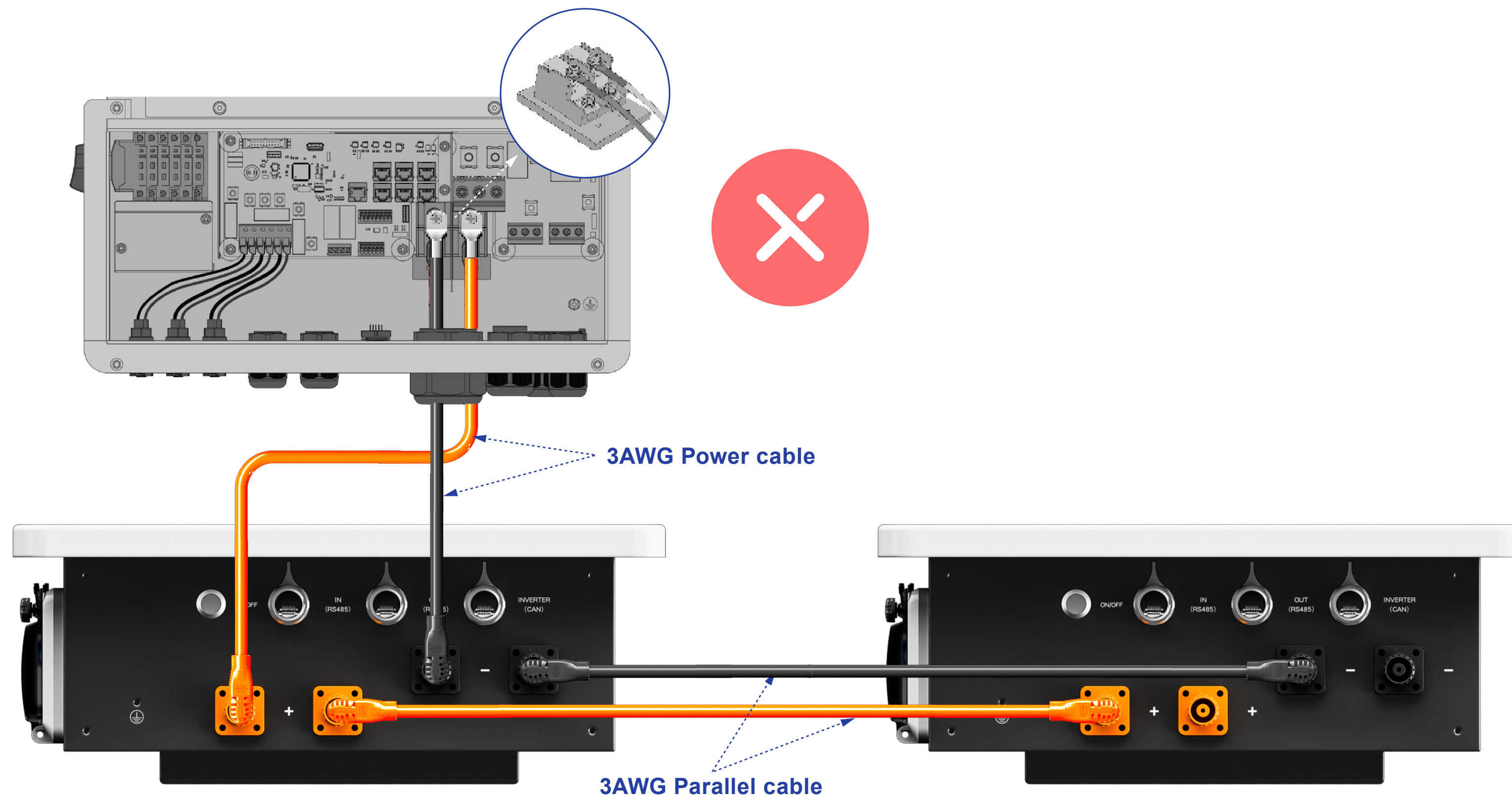
Configuration 2: Two Batteries(1)

- **Wiring:** Use 3AWG power cable to connect the two batteries to the inverter respectively.
- **Note:** The batteries connected to the two battery terminals of the inverter must be of the same brand and exactly the same model.
- **Configuration:** Log in to the HANCHU APP or the iESS portal and reconfigure the parallel current limit, change the “Total Charge/Discharge Current Limit” to 200A to increase the parallel current.
- **External Accessory:** No



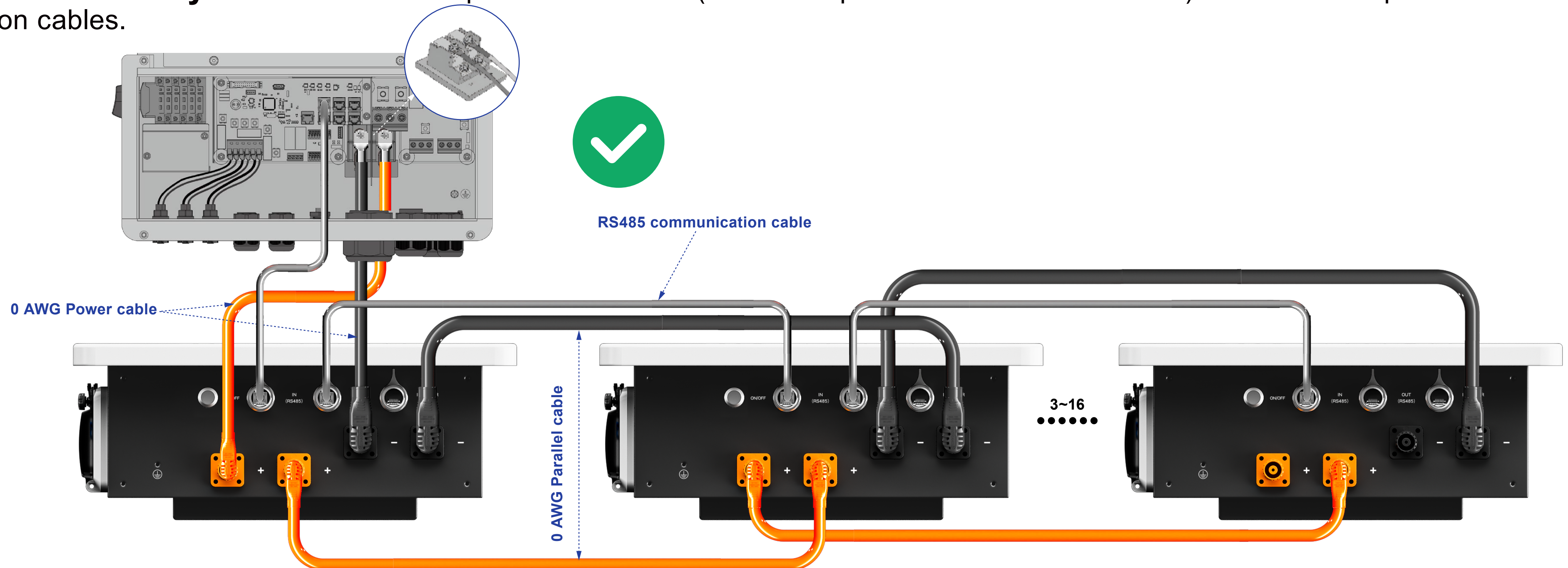
Configuration 2: Two Batteries(2)

- **Incorrect Wiring:** Use 3AWG power cable to connect one battery to the inverter, then parallel the second battery, and set the parallel charge/discharge current to 200 A.
- **Reason for Error:** 3AWG power cable is rated for a maximum current of 100 A, which is exceeded when the current is set to 200A.



Configuration 3: Three or more batteries(1)

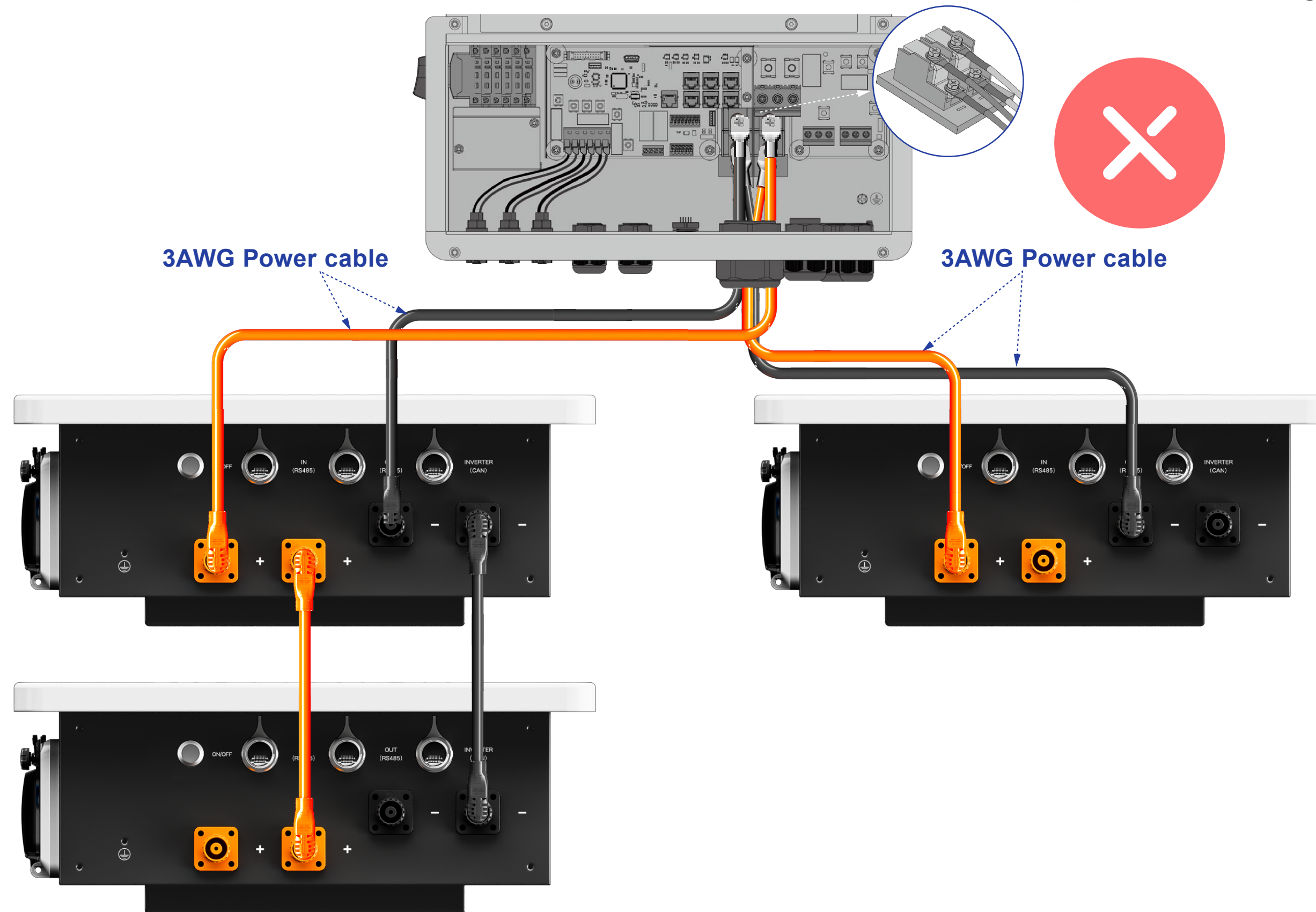
- **Wiring:** Use 0AWG power cable to connect master battery to the inverter, and also use 0AWG parallel cable to connect the remaining batteries in parallel.
- **Configuration:** Log in to the HANCHU APP or the iESS portal and reconfigure the parallel current limit, change the “**Total Charge/Discharge Current Limit**” to **220A** to increase the parallel current.
- **External Accessory:** One set of 0AWG power cables and (number of parallel batteries minus one) sets of 0AWG parallel connection cables.



parallel the remaining two batteries.

Configuration 3: Three or more batteries(2)

- **Incorrect wiring for four batteries in parallel:** Use 3AWG power cable to connect two batteries to the inverter and parallel the remaining one battery. And set the parallel charge/discharge current to 200A.
- **Reason for error:** If the single string battery fails, the standard cable on the other string between the inverter and batteries will exceed its maximum operating current, because there are still two batteries alive and the parallel charge/discharge current is 200A.



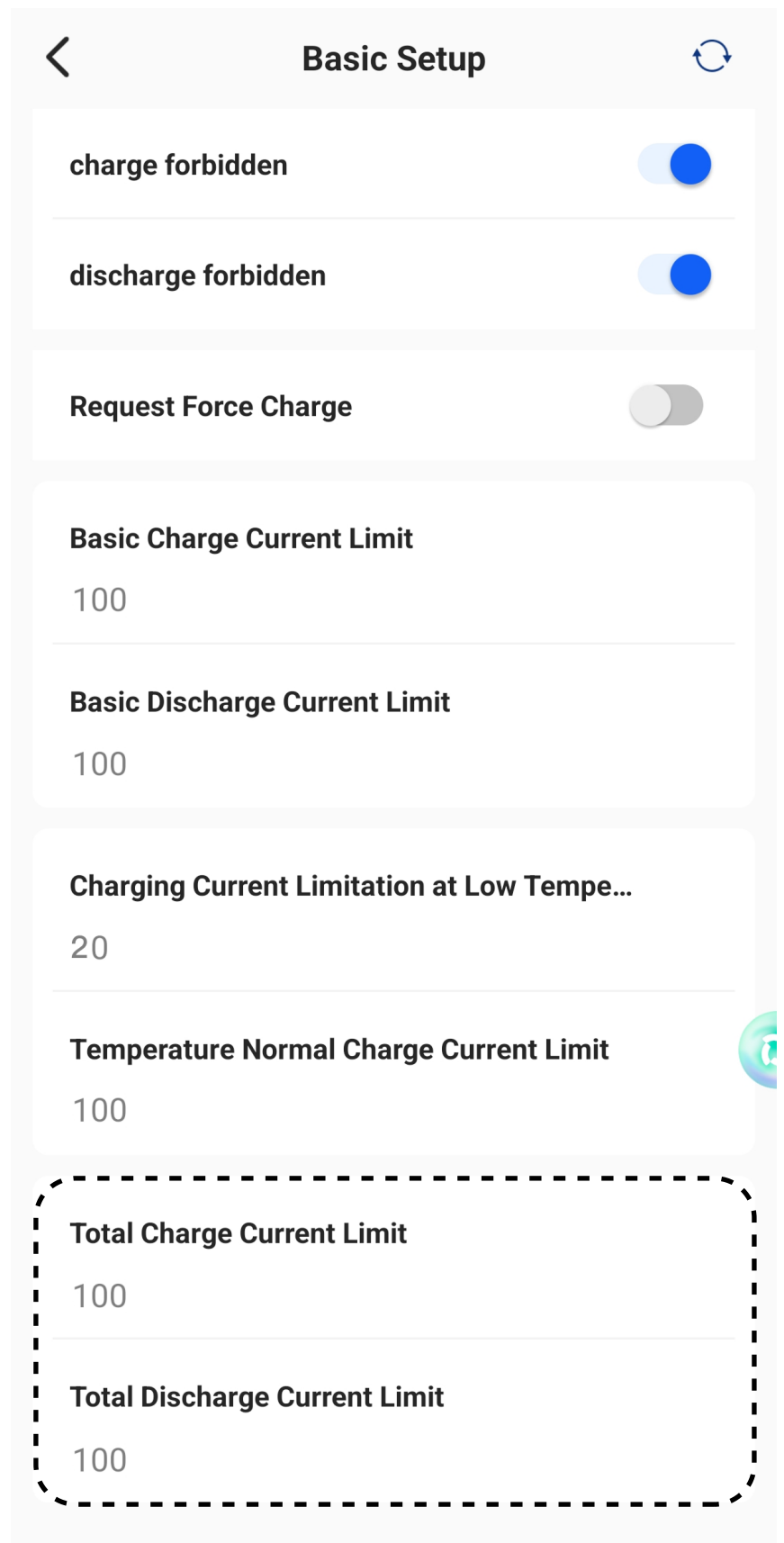
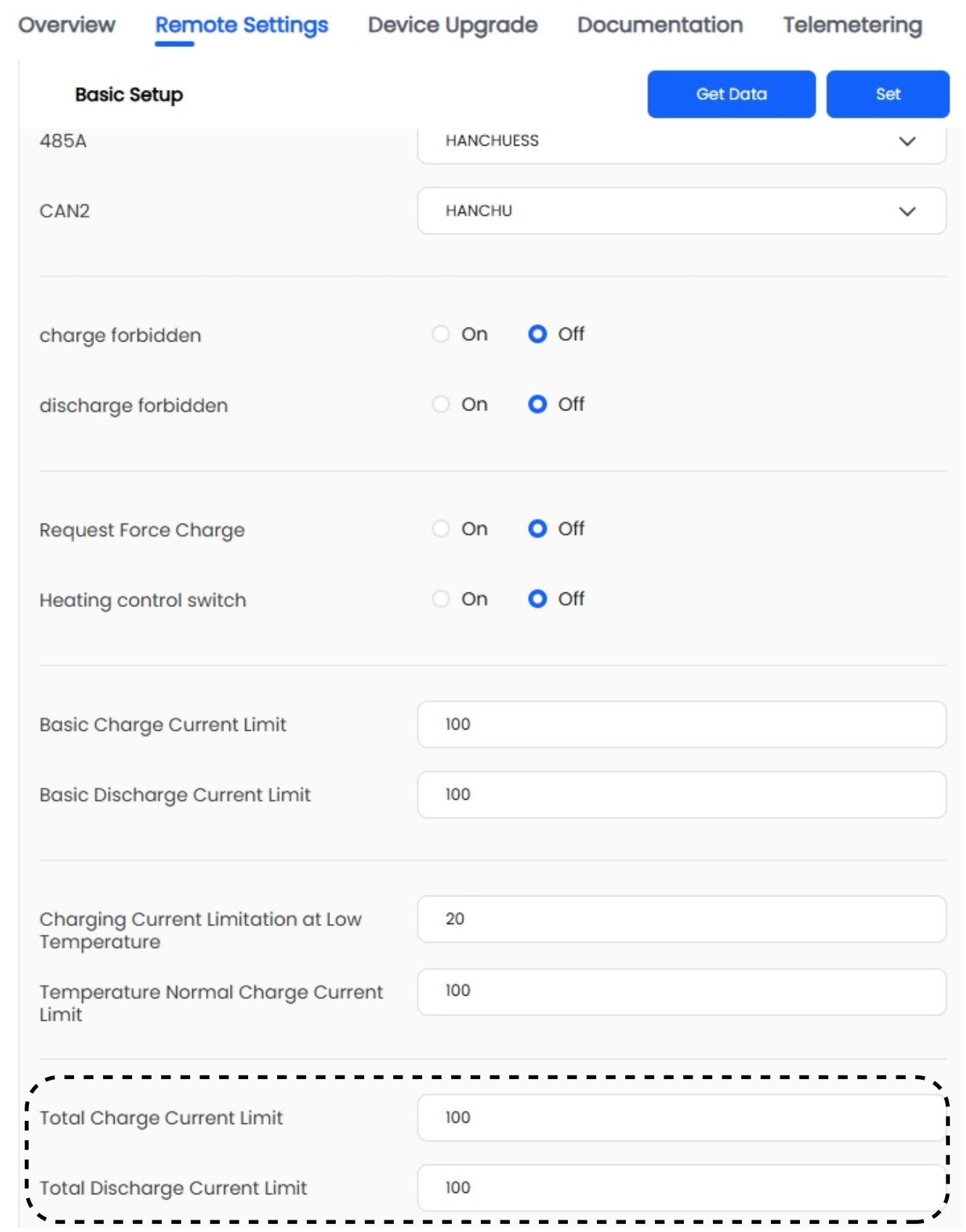
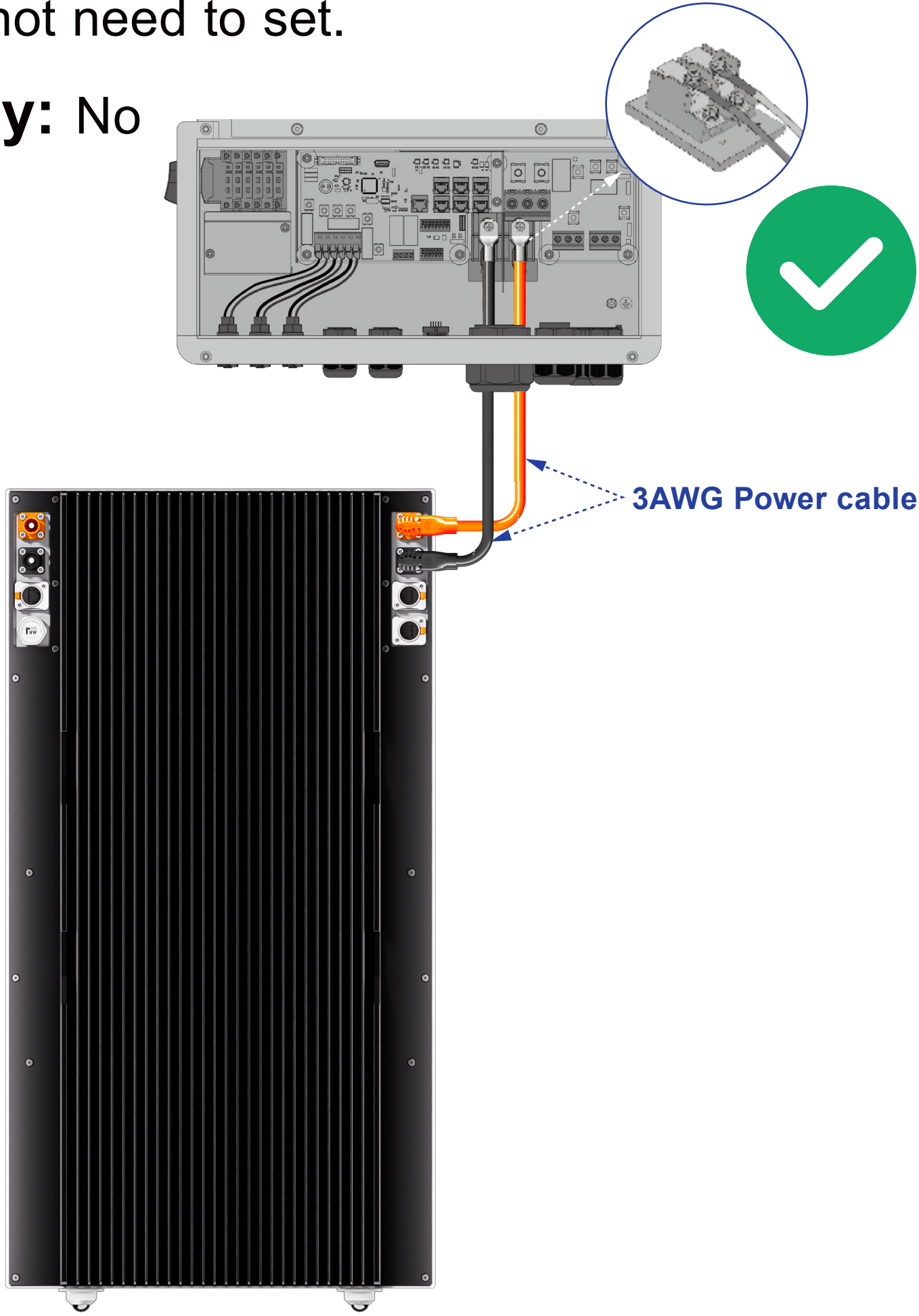
•Wiring Instructions for HESS-HY-S-7.0~10.0K Inverter and HOME-ESS-LV-9.4K Battery

	HOME-ESS-LV-9.4K * 1	HOME-ESS-LV-9.4K * 2	HOME-ESS-LV-9.4K * N (N=3/4/6/8)
External Accessories	NO	NO	YES (Combiner Box) <small>NOTE: The cables highlighted are optional extras and are not included in the standard package.</small>
Cable Used	1.2m 3AWG positive Power cable (BAT-INV) * 1 1.2m 3AWG negative Power cable (BAT-INV) * 1 1.2m CAN communication cable * 1	1.2m 3AWG positive Power cable (BAT-INV) * 2 1.2m 3AWG negative Power cable (BAT-INV) * 2 1.2m CAN communication cable (BAT-INV) * 1 0.4m RS485 communication cable (BAT-BAT) * 1	Use the 10 Power cables in Combiner Box only, following the user manual of Combiner Box 1.2m CAN communication cable (BAT-INV) * 1 0.4m RS485 communication cable (BAT-BAT) * N-1
Set Total Charge/Discharge Current Limit via App/Website	Default (Do not need to set)	Set to 200A	Set to 250A(Max.)



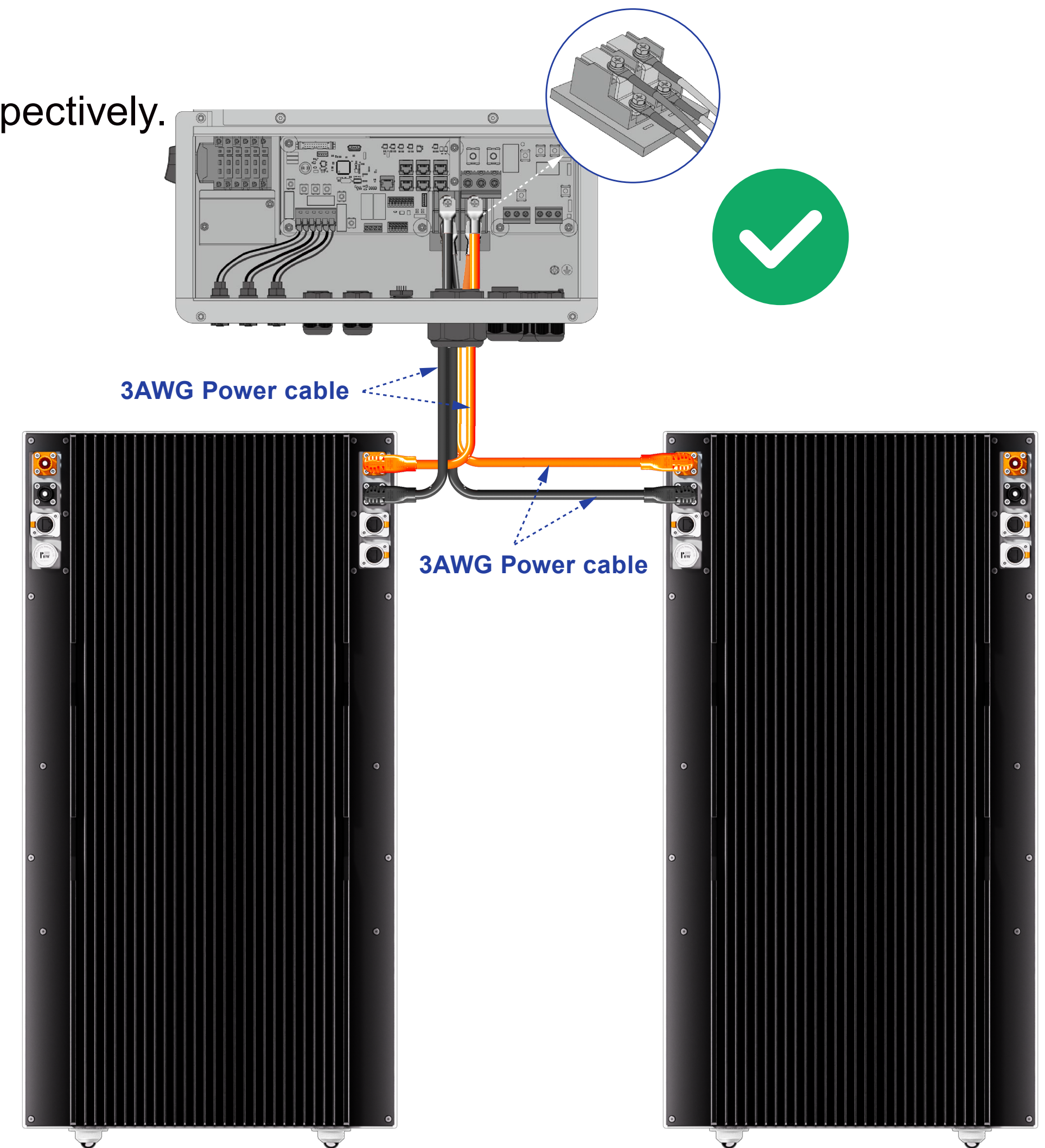
Configuration 1: Single Battery

- **Wiring:** Use 3AWG power cable to connect the battery to the inverter.
- **Configuration:** Do not need to set.
- **External Accessory:** No



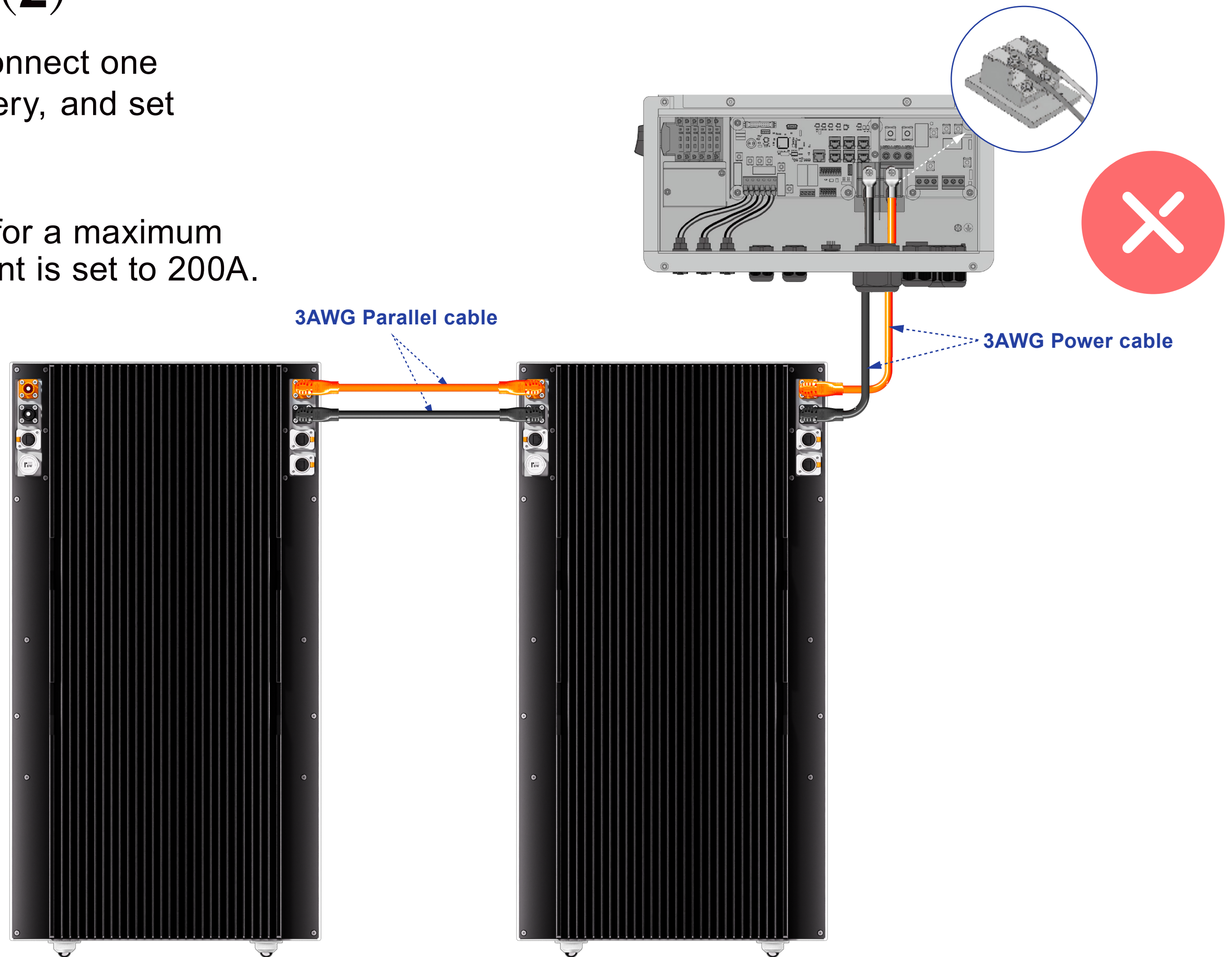
Configuration 2: Two Batteries (1)

- **Wiring:** Use 3AWG power cable to connect the two batteries to the inverter respectively.
- **Note:** The batteries connected to the two battery terminals of the inverter must be of the same brand and exactly the same model.
- **Configuration:** Log in to the HANCHU APP or the iESS portal and reconfigure the parallel current limit, change the “Total Current Limit” to 200A to increase the parallel current. Charge/Discharge
- **External Accessory:** No



Configuration 2: Two Batteries (2)

- **Incorrect Wiring:** Use 3AWG power cable to connect one battery to the inverter, then parallel the second battery, and set the parallel charge/discharge current to 200 A.
- **Reason for Error:** 3AWG power cable is rated for a maximum current of 100 A, which is exceeded when the current is set to 200A.



Configuration 3: Three, Four, Six or Eight batteries

- **Wiring:** Use power cables included within the combiner box together with a HANCHU combiner box.
- **Configuration:** Log in to the HANCHU APP or the iESS portal and reconfigure the parallel current limit, change the “**Total Charge/Discharge Current Limit**” to **250A** to increase the parallel current.
- **External Accessory:** One HANCHU combiner box, Power cables included within the combiner box.

