

# Battery Low Voltage Battery

HOME-ESS-LV-5.12K-M

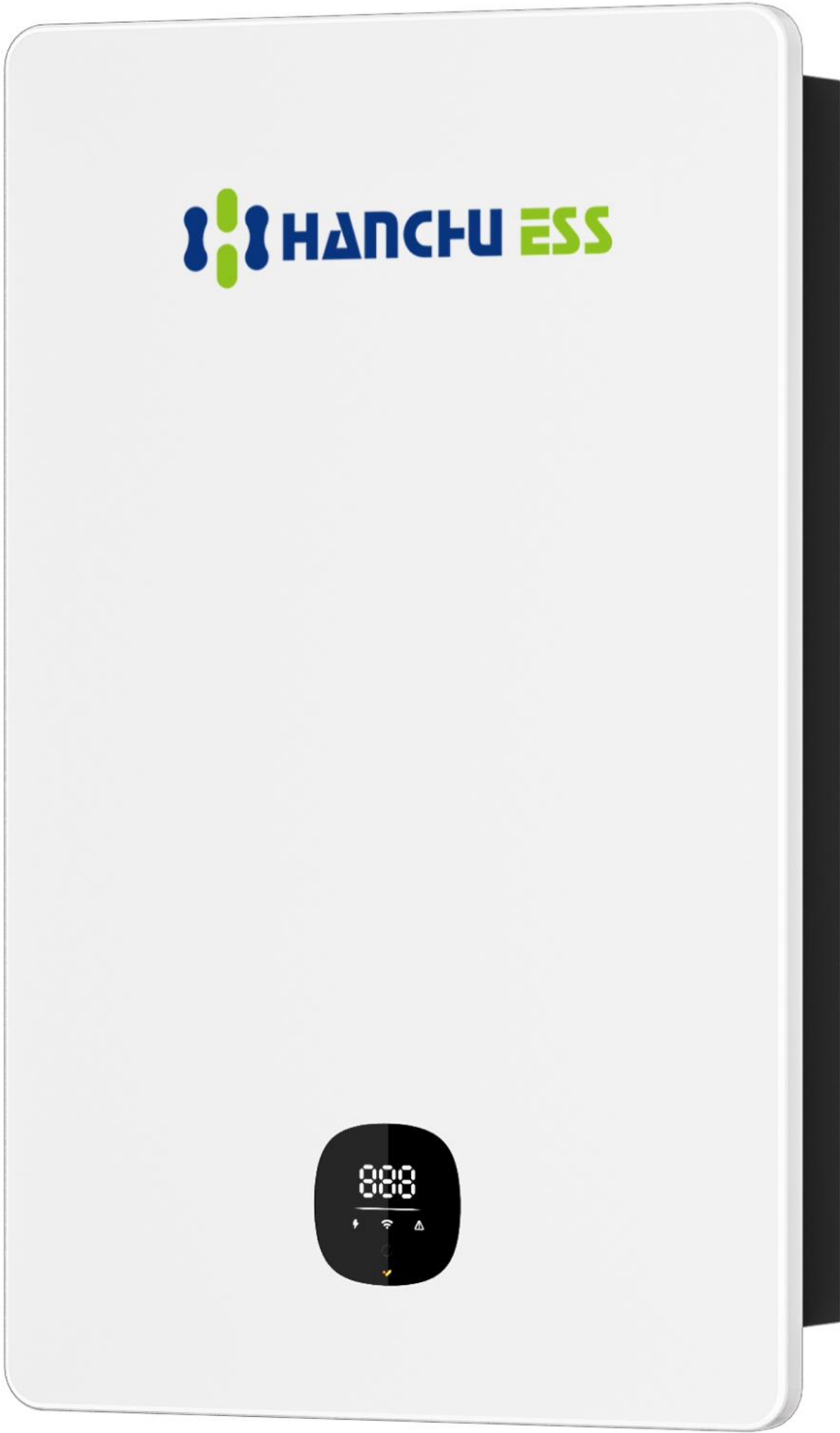


Smart Energy Sustainable Solutions

Technical Parameter



Model	HOME-ESS-LV-5.12K-M
Nominal Energy	5.12kWh
Nominal Voltage	51.2V
Cell Type	LFP(LiFePO <sub>4</sub> )
Nominal Charge/Discharge Current	100A
Weight	45.5Kg
Dimension(W*D*H)	400*139*650mm
Communication	CAN/RS485/WIFI/Bluetooth
Depth of Discharge	95% DOD
Ingree Protection Degree	IP66
Battery Safety	IEC 62619/CE-EMC





## Superior Performance

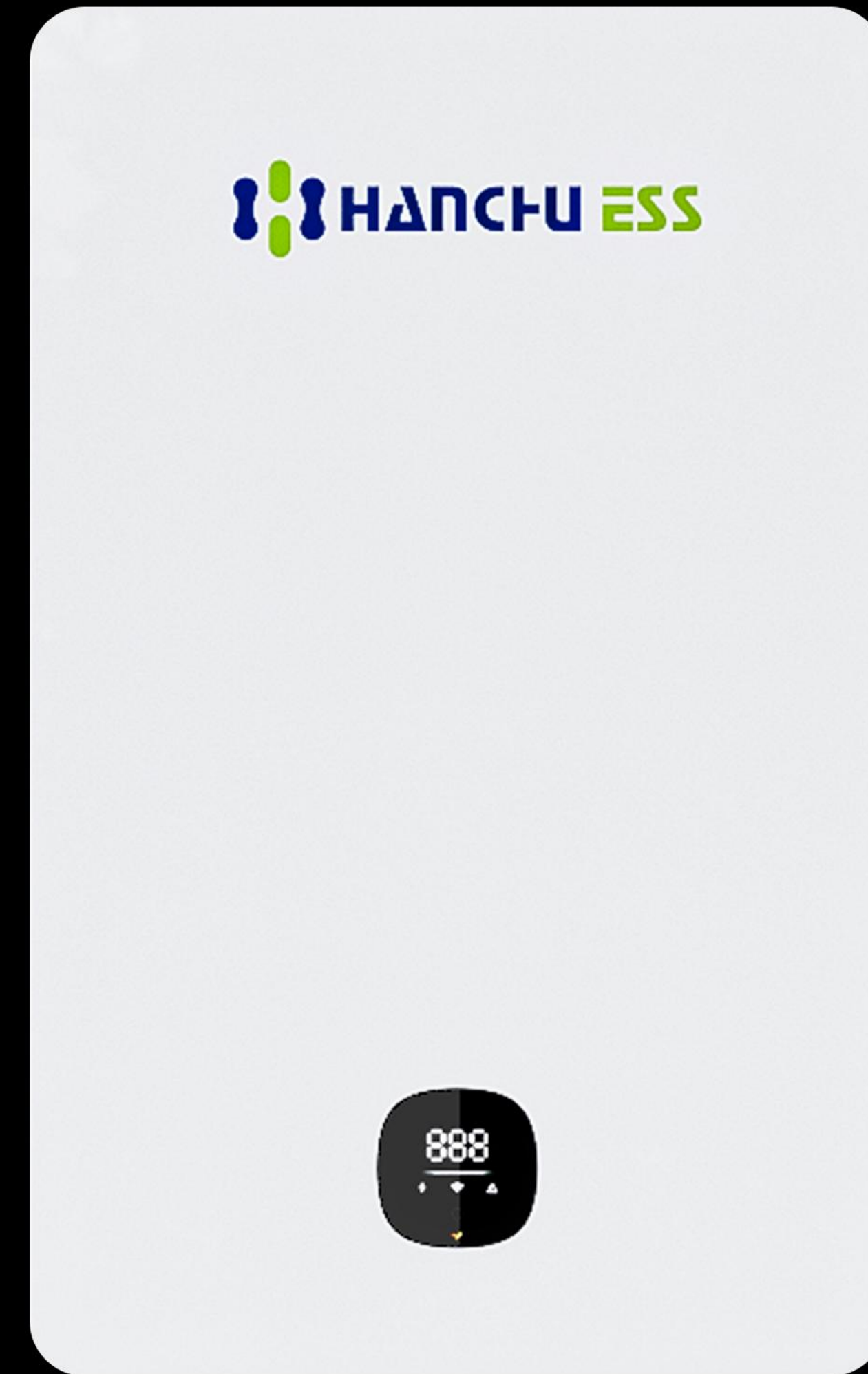
- Light
- **More Energy**
- Greater Performance
- Display Panel



- Up to **16 batteries** can be paralleled, providing a maximum of **81.92kWh** of power.
- The **main circuit** can withstand a maximum current of **200A** when paralleled, **no need to install a combiner box** when connecting to a high-power inverter.

## Superior Performance

- Light
- More Energy
- Greater Performance
- **Display Panel**

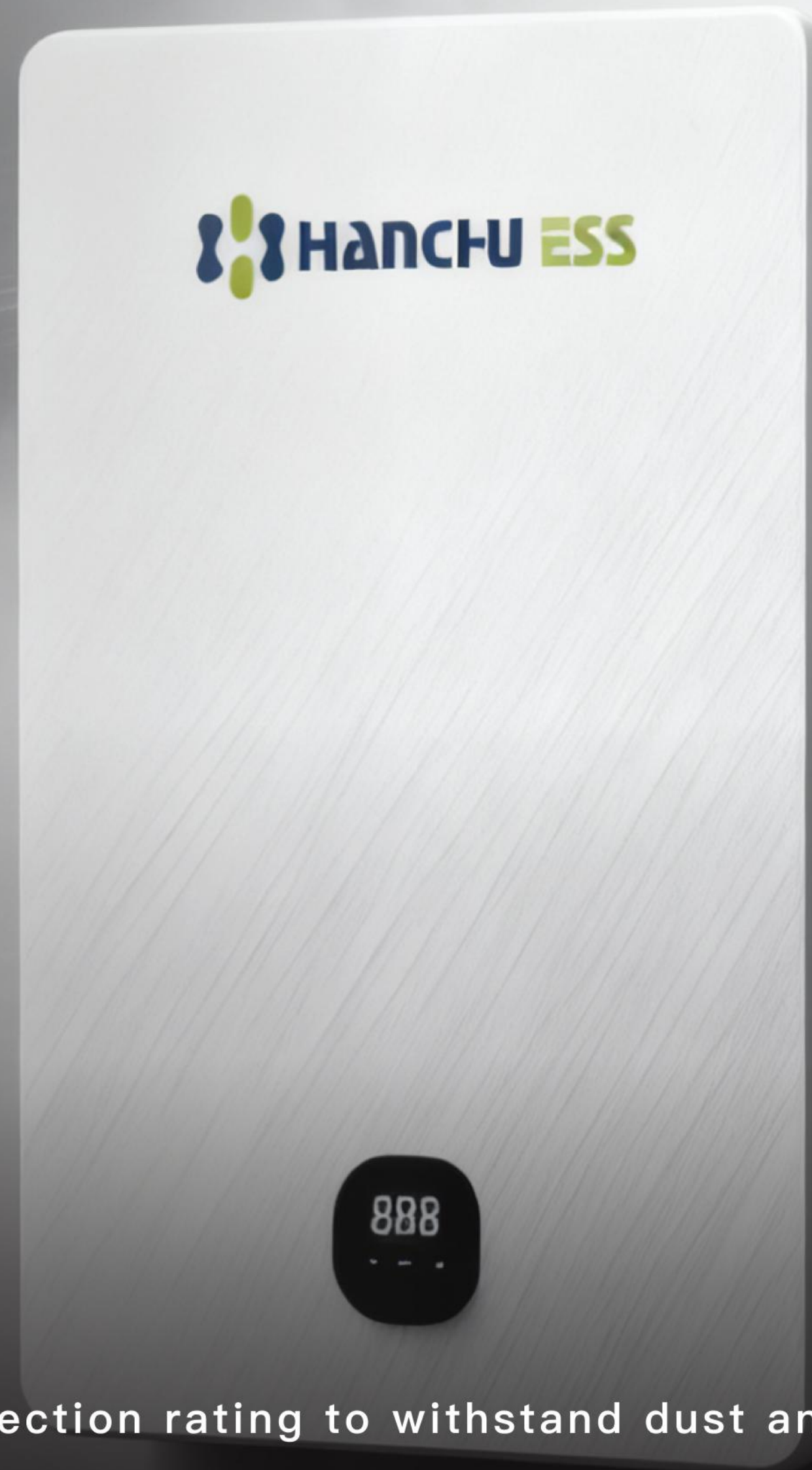


Newly upgraded to a display panel, enabling more intuitive and convenient access to battery operational status or error messages.



## Leading Technology

- IP66
- Auxiliary Heating
- Smart Management



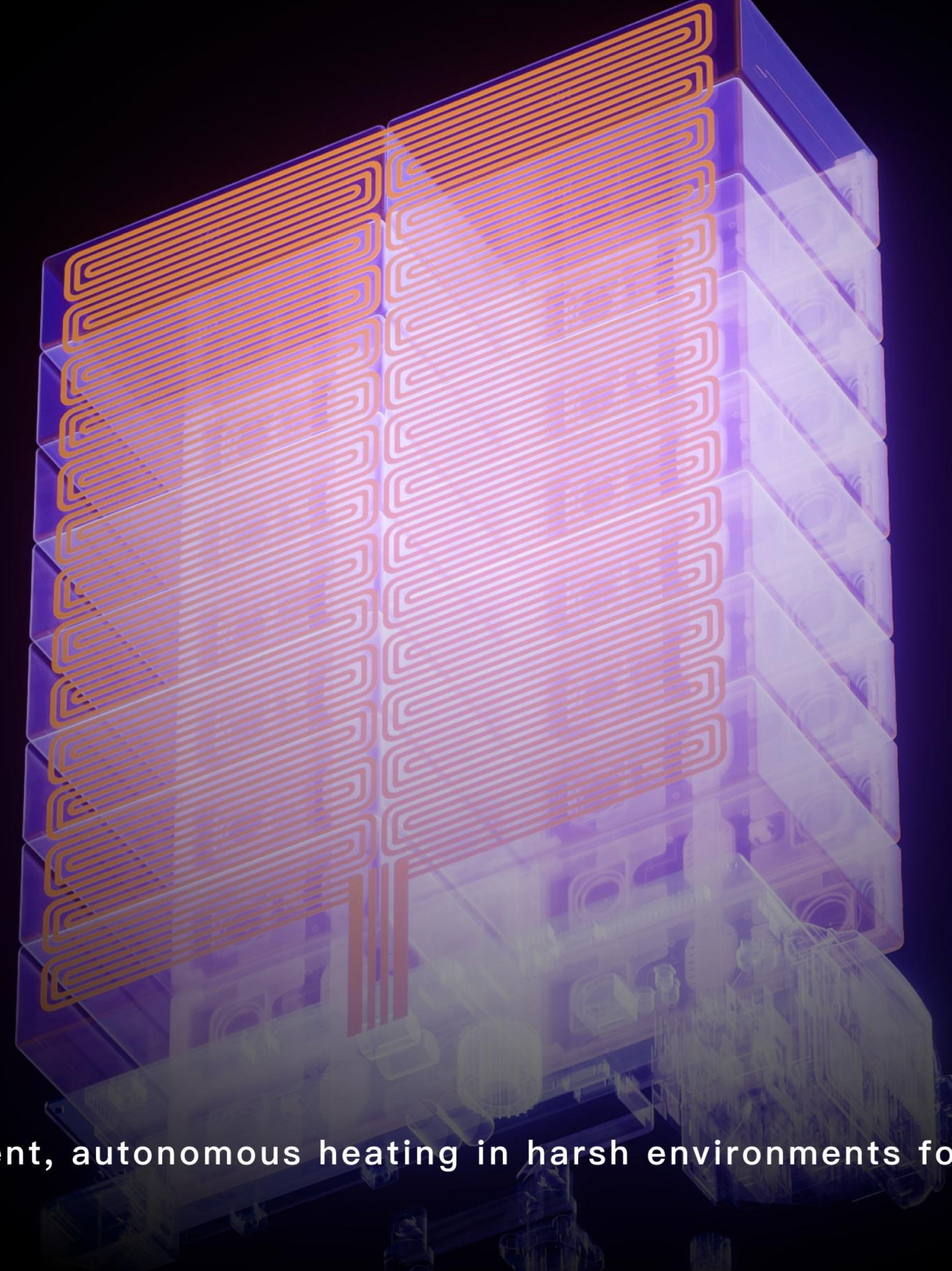
- Enhances the battery's inherent protection rating to withstand dust and water ingress damage when necessary.
- Protects internal components from corrosion and particulate impact, extending system lifespan.



## Leading Technology

- IP66
- **Auxiliary Heating**
- Smart Management

- The embedded heating film enables efficient, autonomous heating in harsh environments for external-support-free stable operation.
- Maintains full charge/discharge capacity, efficiency & power output even in severe low temperatures.
- Significantly cuts failure risks in freezing conditions for ultimate protection and system longevity.





## Ultimate Security

### LFP Cell

High safety, long lifespan, deep cycling, and high-temperature adaptability ensure reliable energy storage.

### Thermal Aerosol

Provides efficient fire protection to improve the safety of the battery system

### Smart BMS

- Voltage Detection
- Current Detection
- Temperature Detection
- Short-circuit Protection
- Over-charge Voltage Protection

### External Circuit Breaker

Quickly disconnects current for enhanced safety and easier maintenance.

### Explosion-proof Valve

Balances internal and external pressure to prevent swelling or explosion risks.



## Convenient Installation

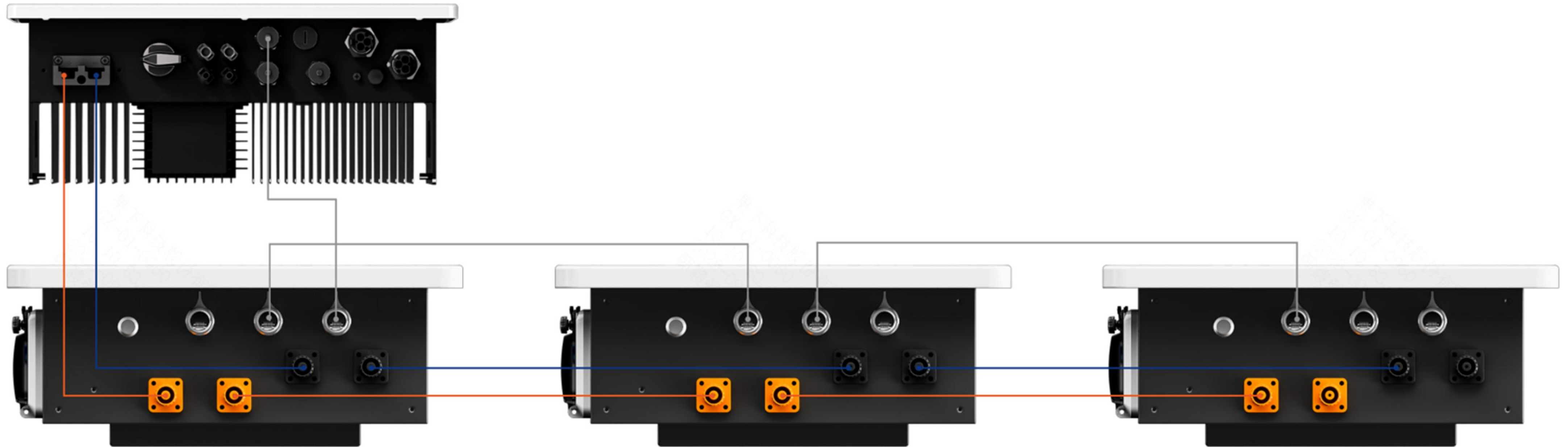
- **Wall mounting**
- **Wiring Completion**
- Built-in collector
- Intelligent Automatically Addressing
- 30-second Fast Matching Network



- **Hidden wall mounting bracket** simplifies installation while enhancing aesthetics.
- It can be used with **outdoor cabinets**, eliminating drilling time for faster and more convenient installation.



## Convenient Installation



- Batteries are shipped with **finished wiring harnesses**, eliminating the need for manual crimping process.

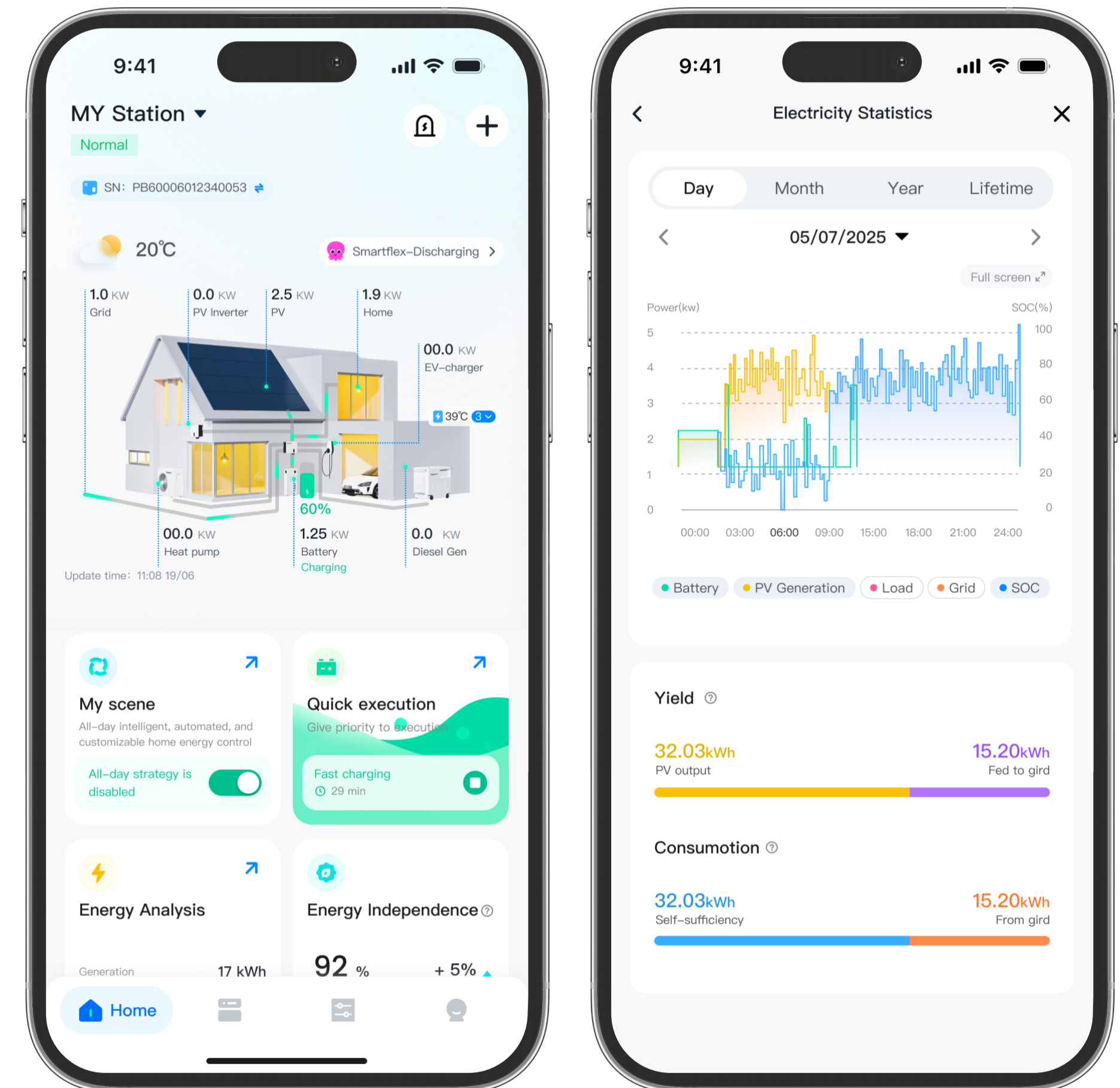
## Convenient Installation

### •Intelligent Automatically Addressing

Automatically assigns master and slave addresses, eliminates manual dialling, avoids dialling errors and saves installation time.

### •30-second Fast Matching Network

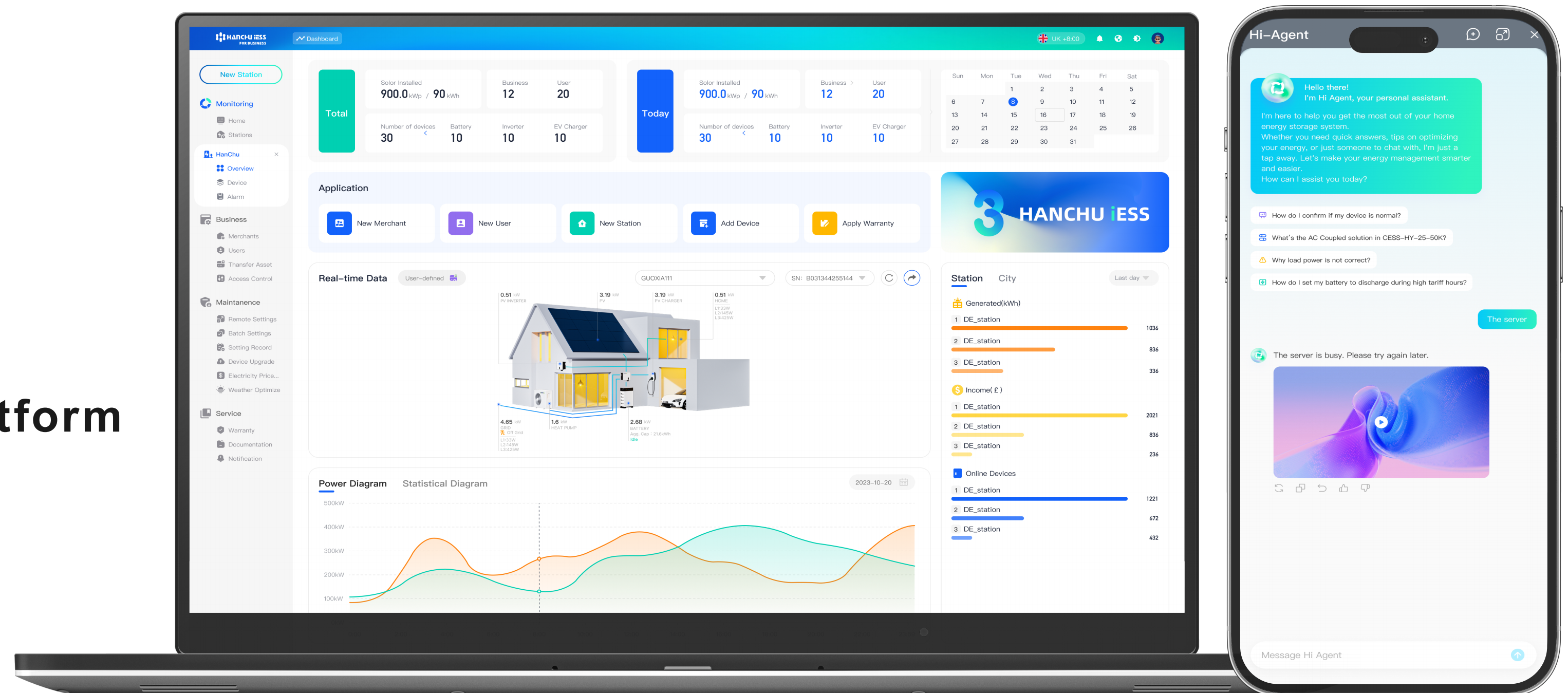
Batteries can be quickly networked, bound to APP and cloud platform, can easily achieve real-time battery monitoring and settings.





# Cloud&APP

- 3 mins OTA Remote Upgrade
- 7/24 real-time monitoring
- Fast configuration via APP/Platform
- Remote Energy Management



By connecting to the iESS, end-users can monitor and control their energy storage systems and analyse historical data in real time via mobile apps or web pages, which enhances the user's experience of visual management of the system, and at the same time brings convenience for after-sales.



**THANK YOU !**

 HANCHU ESS

888