

# AI strategy Quick Guide—APP

---

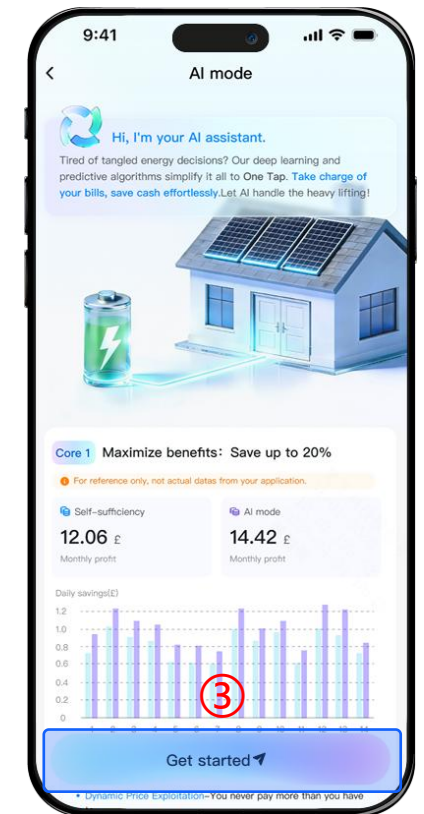
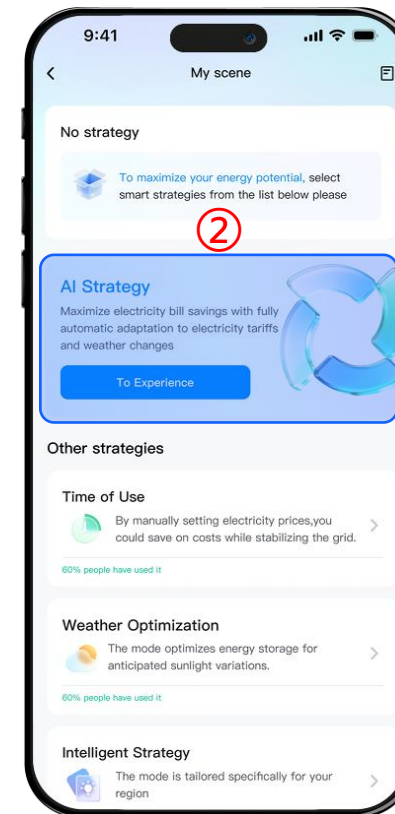
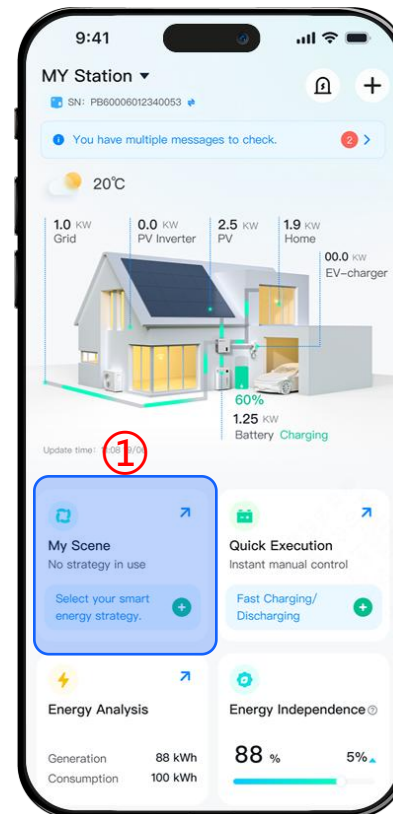
HESS-HY-S-3.0k/3.68k/4.0k/5.0k/6.0k

HESS-HY-T-5k/6k/8k/10k/12k

Innovate · Enjoy  
Smart Energy, Sustainable Solutions

## AI Strategy

- Tap “1” to start the latest AI strategy or switch to other strategies here.
- Tap “2” to learn about the AI strategy and decide whether to apply it.
- Swipe down to view details, then tap the button to enable the AI strategy.

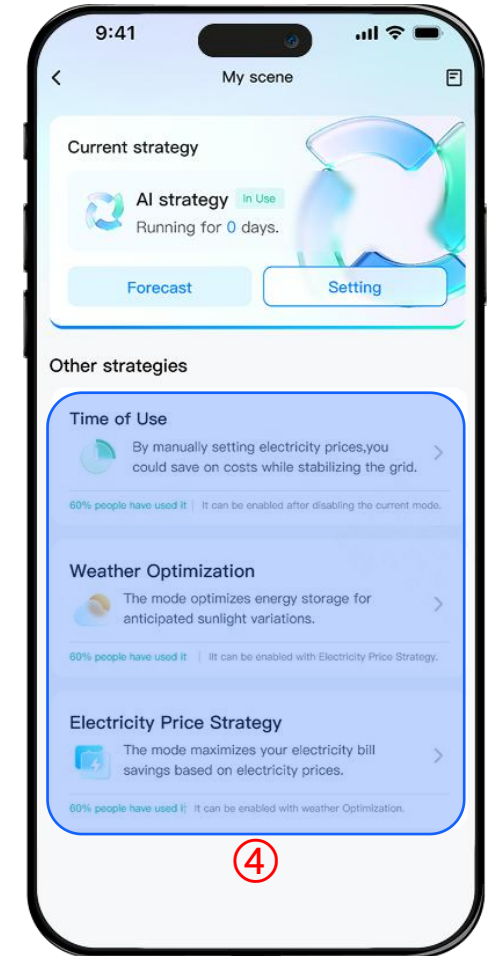
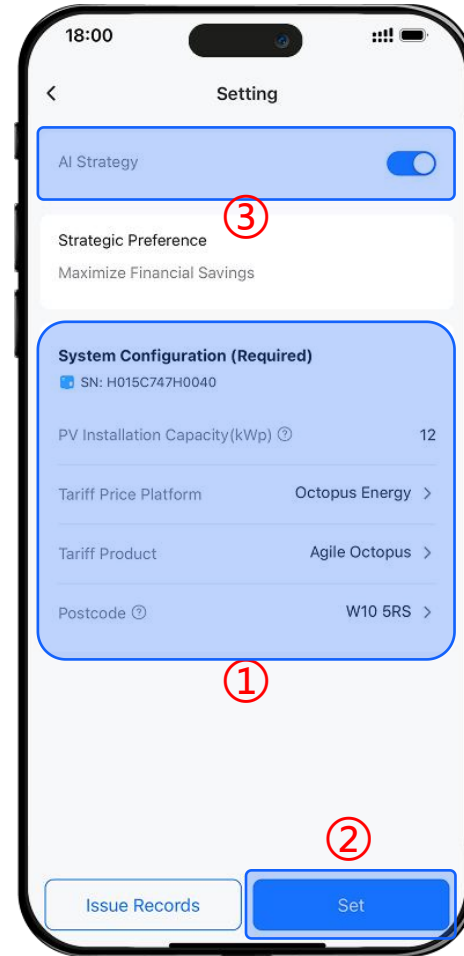


## AI Strategy

- First click "1" to Select your electricity tariff plan, then click "2" to confirm.

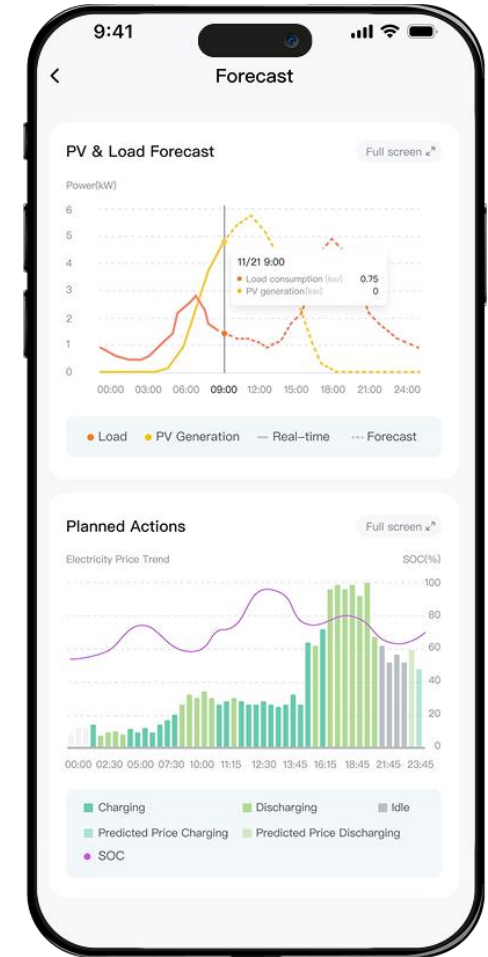
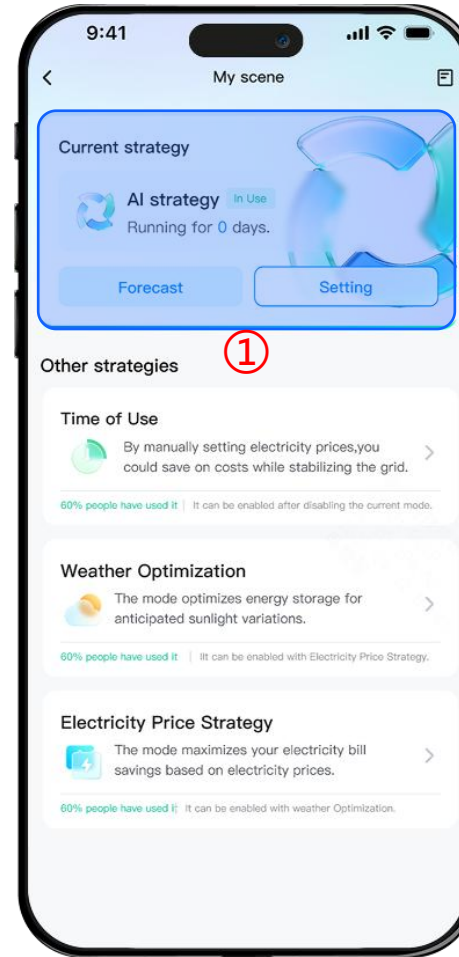
**Note:** Please ensure the PV installed capacity and the postal code of your power station are entered correctly. The normal execution of charging and discharging depends on the accuracy of forecasts.

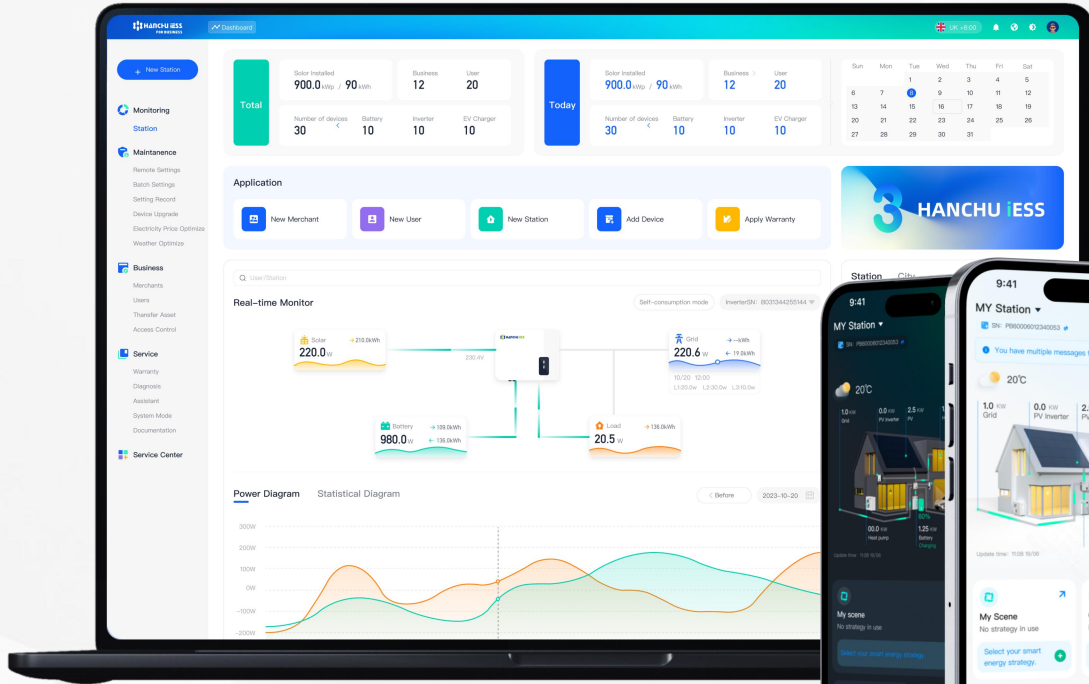
- Once setup is done, you can click "3" toggle the switch to enable the AI strategy. You may then return to the previous page to check the strategy status.
- Need adjustments? Tap "4" to switch back to other strategies at any time.



## AI Strategy

- As shown in “1”, When the AI strategy is active, tap the Forecast button to view predictions and the planned actions. If you need to disable the strategy or change your electricity tariff plan, tap the Setting button.
- When the AI strategy is active, tap the “Forecast” button. On the AI Mode Forecast page, you will see a clear timeline-based list of planned AI actions covering the day. This includes the reasoning behind each decision, which takes into account electricity prices, PV generation forecasts, and load usage predictions, with the goal of maximizing revenue.





<https://www.hanchuess.com>



# Thank You

---

Innovate · Enjoy  
Smart Energy, Sustainable Solutions